

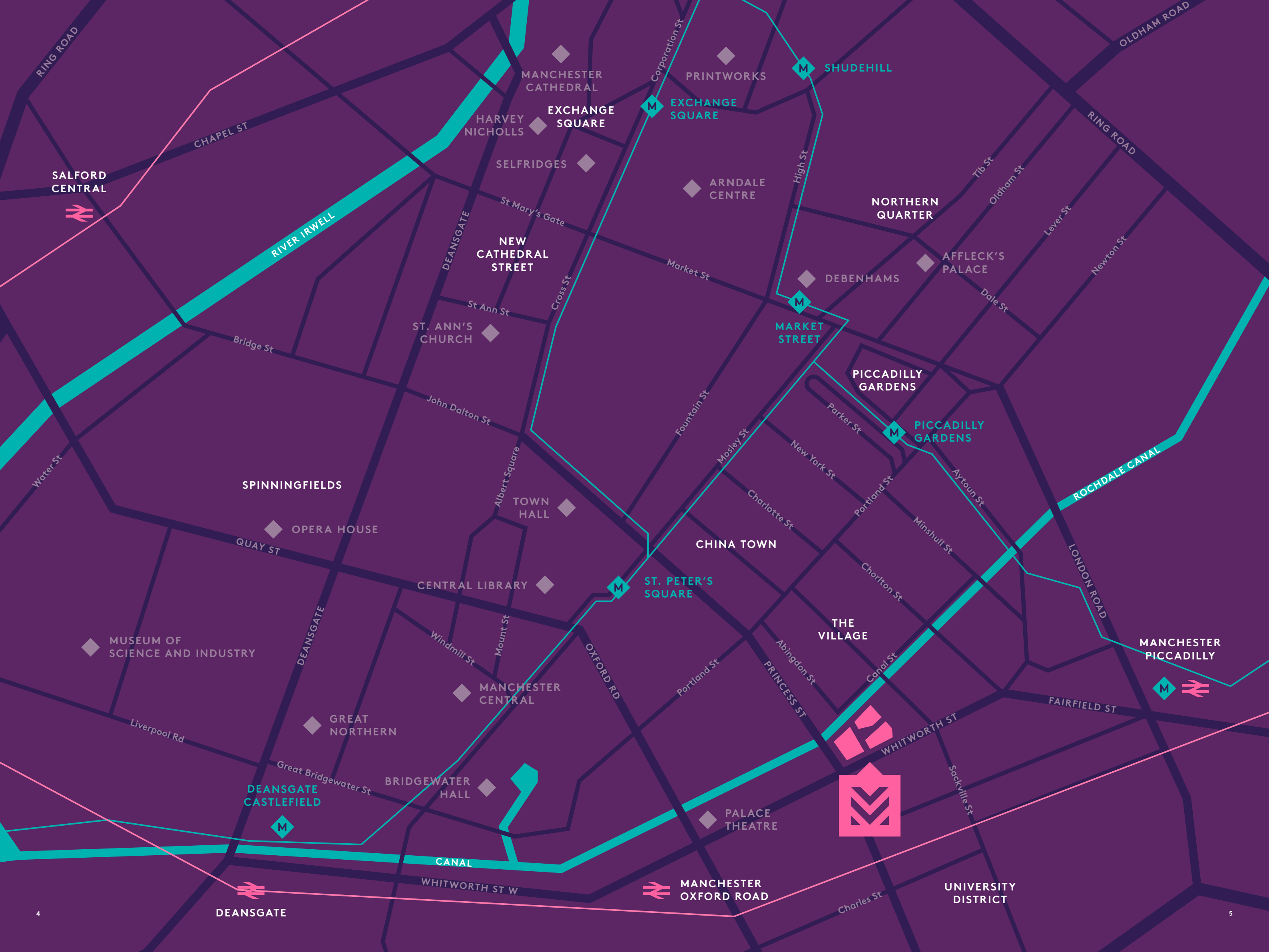




# THE BUILDINGS

Manchester New Square is made up of three individual buildings centred around a tranquil, landscaped square, in the beating heart of the city's central community. It's just a few minutes' walk to the city's attractions and transport hubs. Residents and visitors alike will benefit from the artisan restaurants and retailers on the ground floors.





SALFORD CENTRAL



RIVER IRWELL

MANCHESTER CATHEDRAL

EXCHANGE SQUARE

EXCHANGE SQUARE

SHUDEHILL

SELFRIDGES

ARNDALE CENTRE

NORTHERN QUARTER

NEW CATHEDRAL STREET

DEBENHAMS

AFFLECK'S PALACE

ST. ANN'S CHURCH

MARKET STREET

PICCADILLY GARDENS

PICCADILLY GARDENS

SPINNINGFIELDS

OPERA HOUSE

TOWN HALL

CHINA TOWN

ST. PETER'S SQUARE

THE VILLAGE

MUSEUM OF SCIENCE AND INDUSTRY

CENTRAL LIBRARY

MANCHESTER PICCADILLY



GREAT NORTHERN

MANCHESTER CENTRAL

PALACE THEATRE

DEANSGATE CASTLEFIELD

BRIDGEWATER HALL



CANAL

MANCHESTER OXFORD ROAD

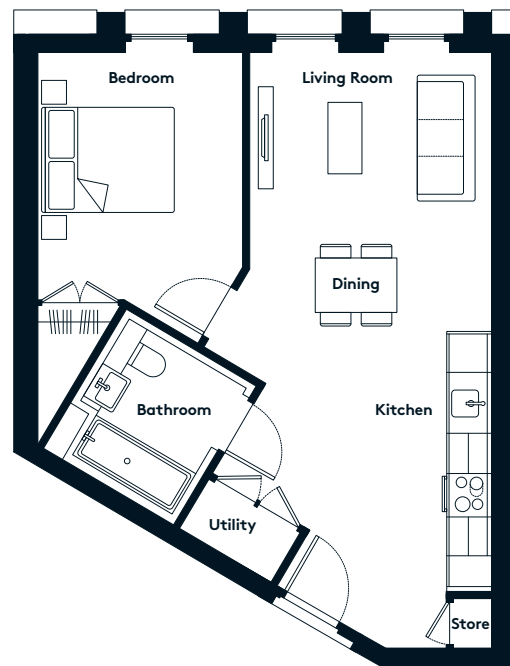
UNIVERSITY DISTRICT

DEANSGATE



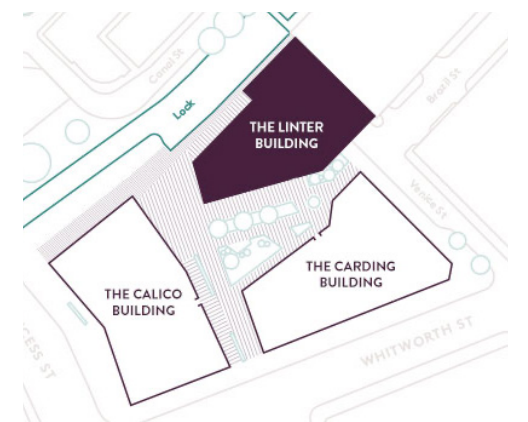
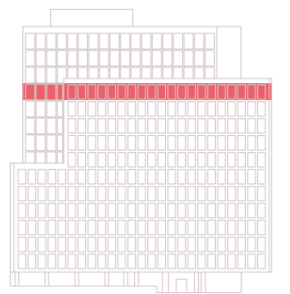
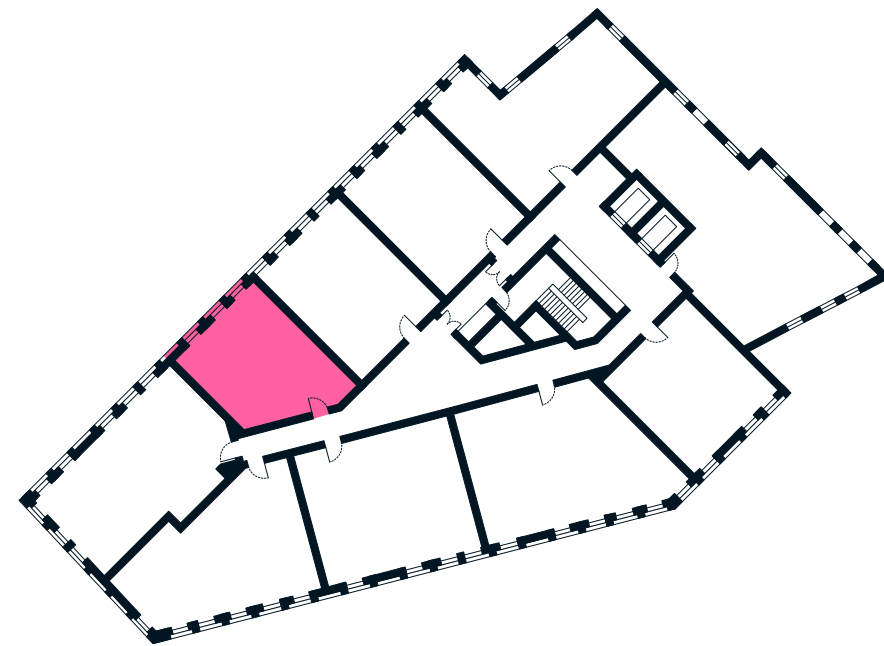
# THE LINTER BUILDING 1 BEDROOM APARTMENT TYPE 1-06-A

Sq m	51.4
Sq ft	553



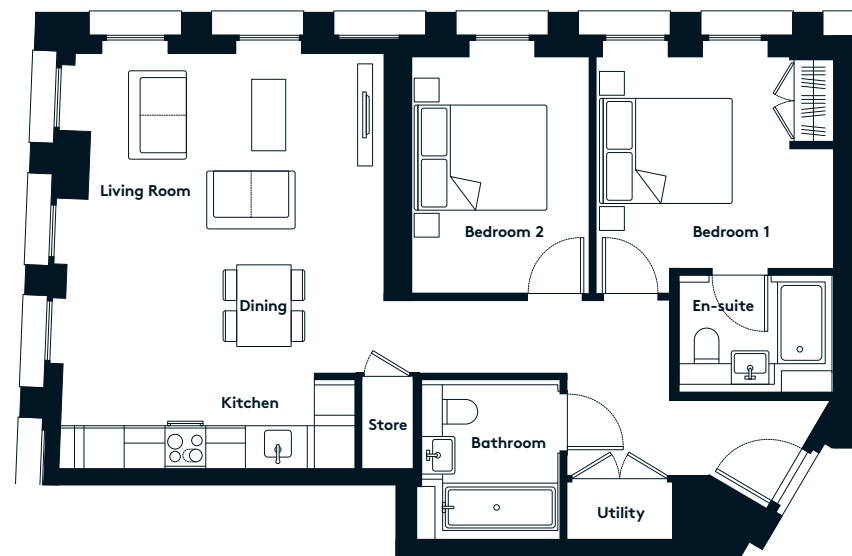
# AVAILABLE APARTMENTS

11th floor	1107
------------	------



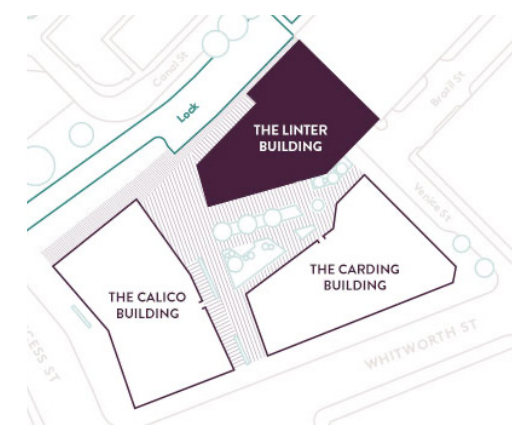
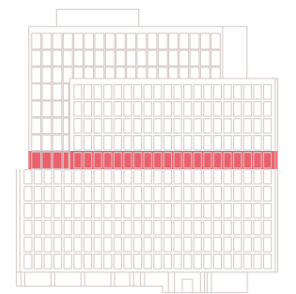
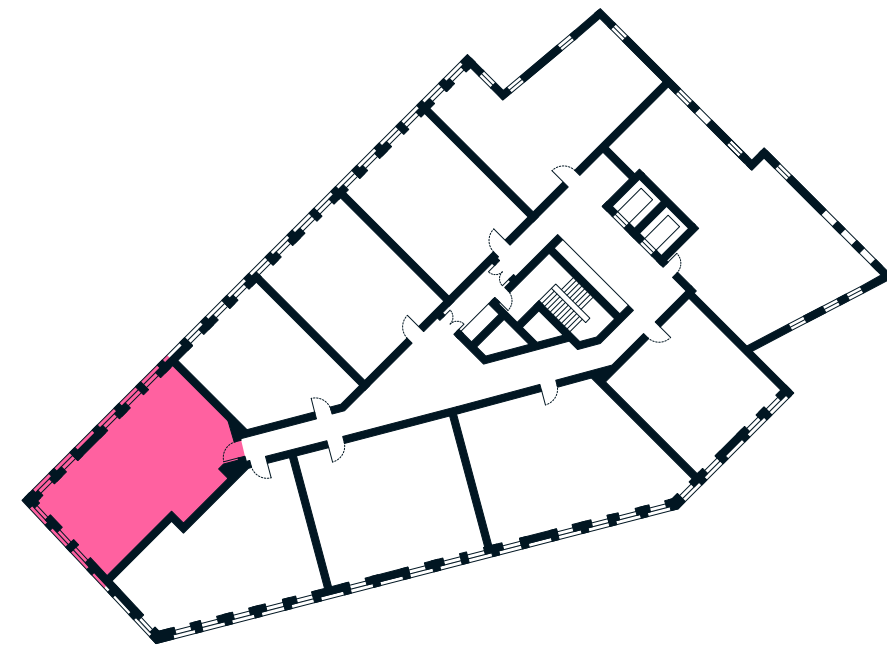
# THE LINTER BUILDING 2 BEDROOM APARTMENT TYPE 2-01-A

Sq m	74.4
Sq ft	801



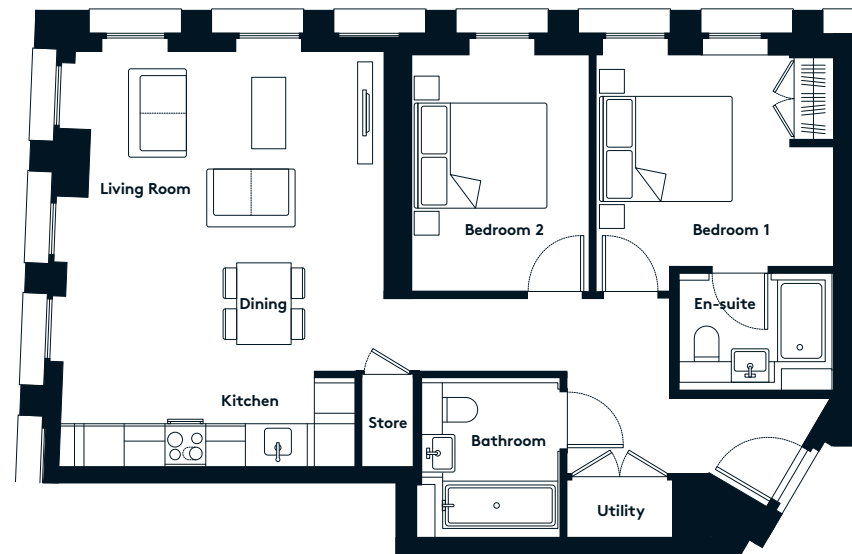
# AVAILABLE APARTMENTS

7th floor	706
-----------	-----



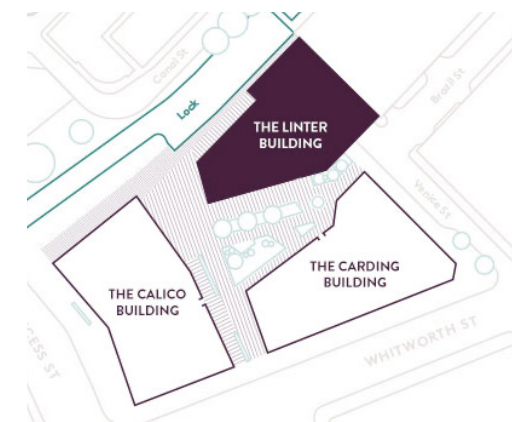
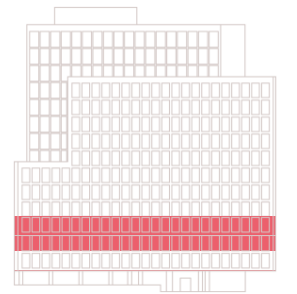
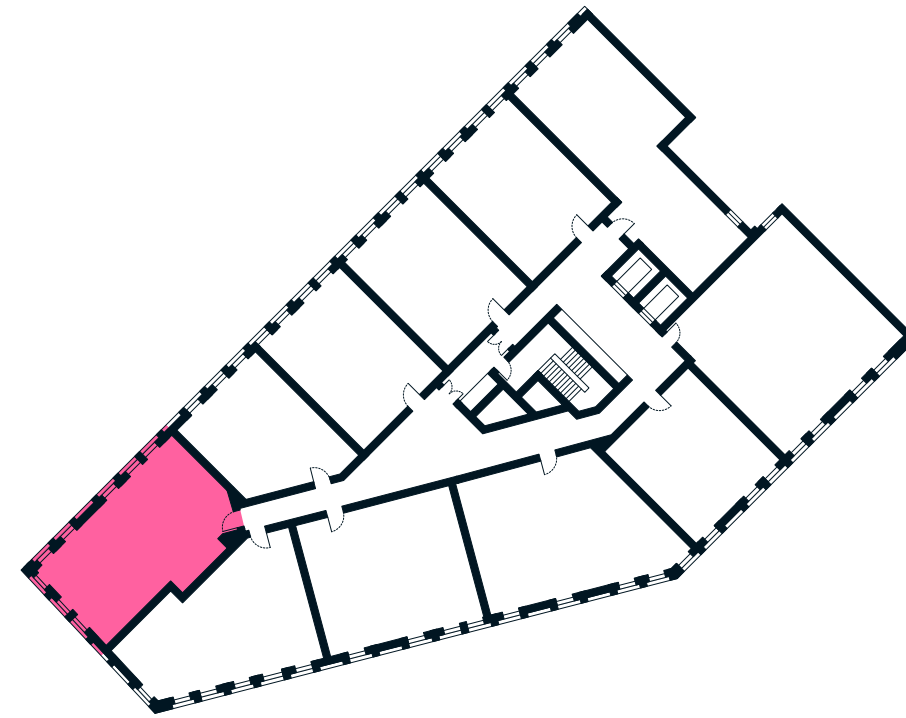
# THE LINTER BUILDING 2 BEDROOM APARTMENT TYPE 2-01-C

Sq m	74.3
Sq ft	799



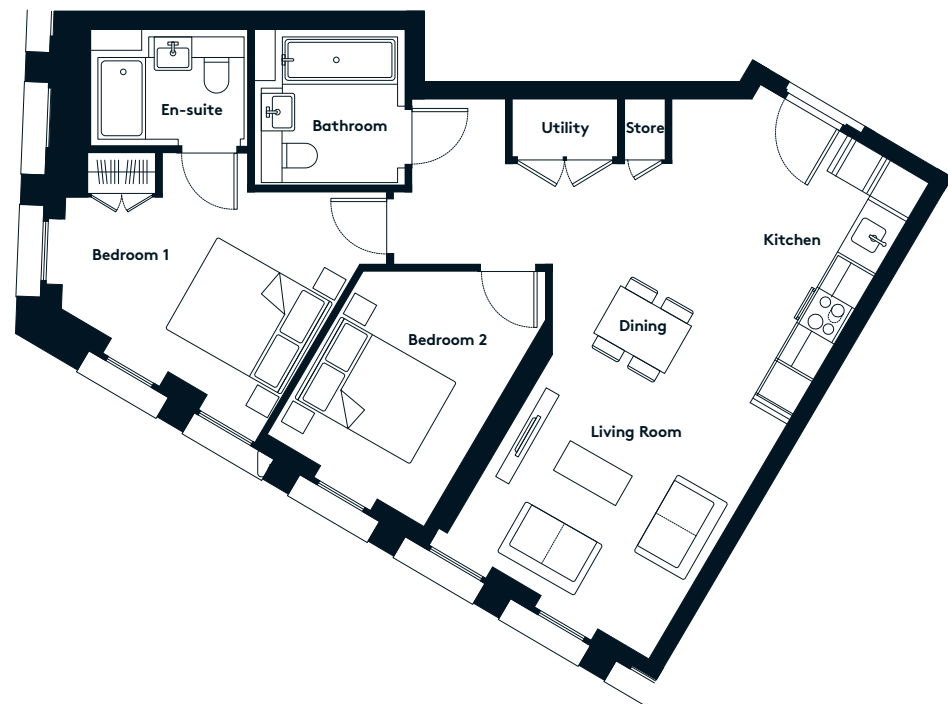
# AVAILABLE APARTMENTS

2nd floor	207
3rd floor	306



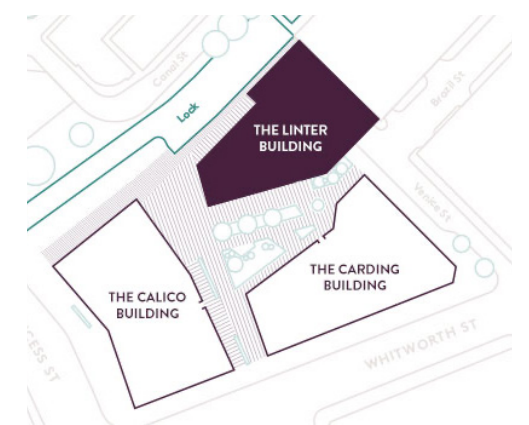
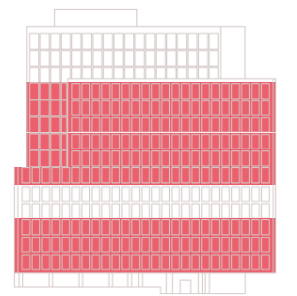
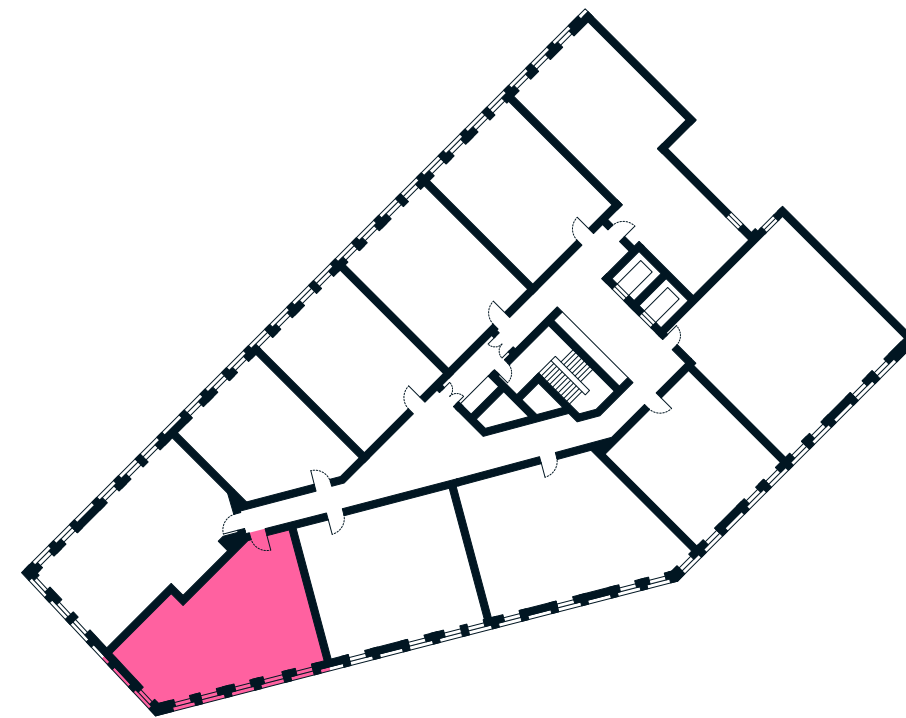
# THE LINTER BUILDING 2 BEDROOM APARTMENT TYPE 2-02-A

Sq m	73.7
Sq ft	793



# AVAILABLE APARTMENTS

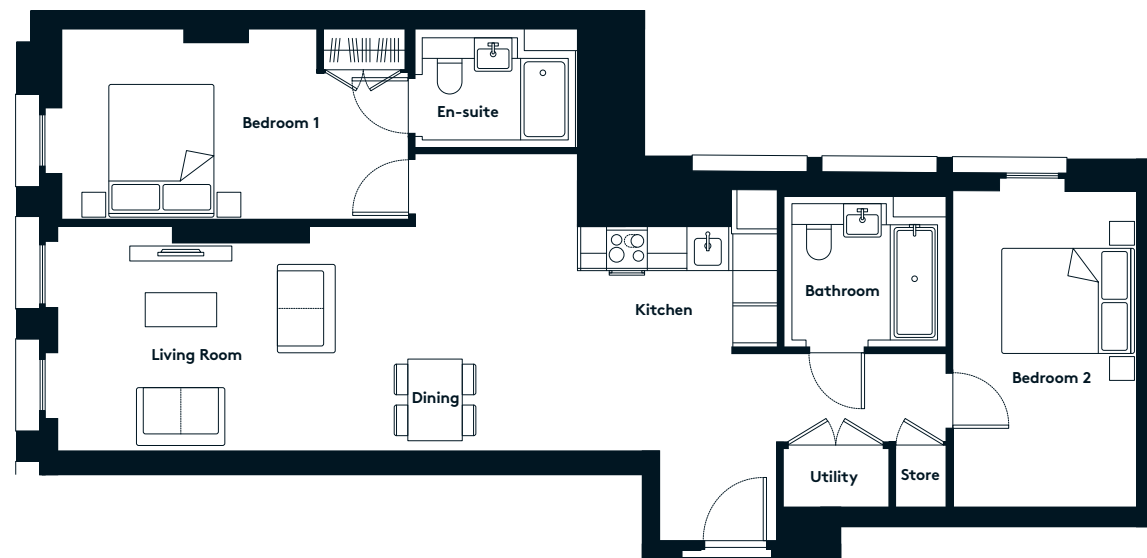
1st floor	106
2nd floor	206
3rd floor	305
6th floor	605
7th floor	705
8th floor	805
9th floor	905
10th floor	1005
11th floor	1105





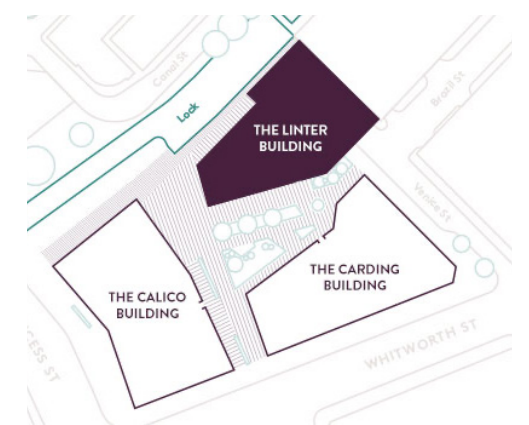
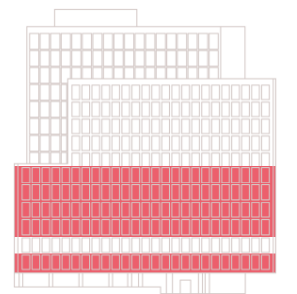
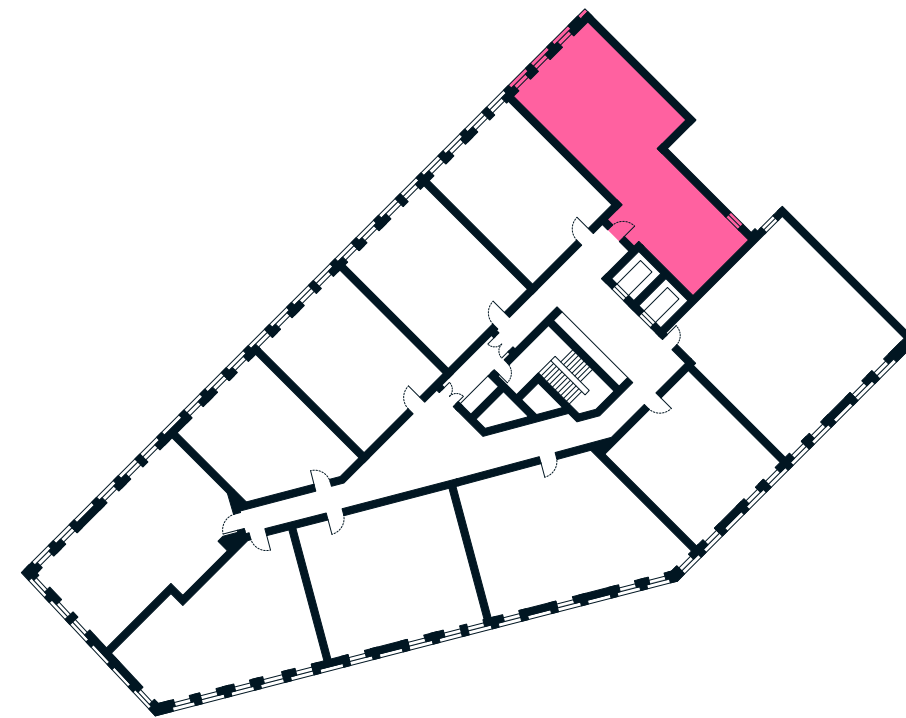
# THE LINTER BUILDING 2 BEDROOM APARTMENT TYPE 2-03-A

Sq m	87.8
Sq ft	945



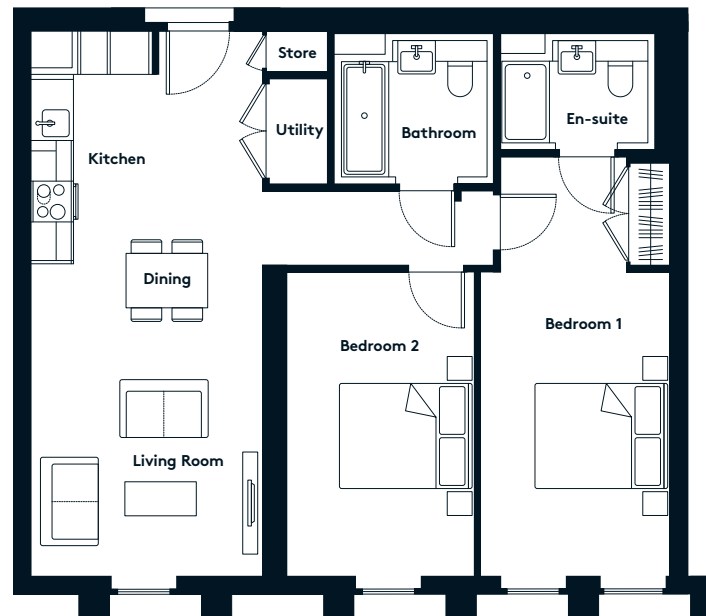
# AVAILABLE APARTMENTS

1st floor	112
3rd floor	311
4th floor	411
5th floor	511
6th floor	611



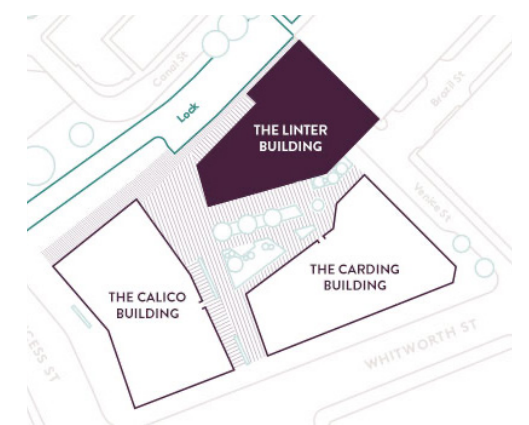
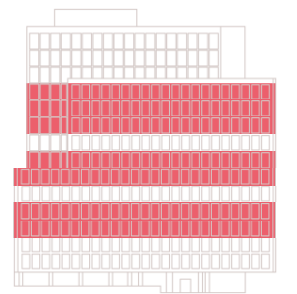
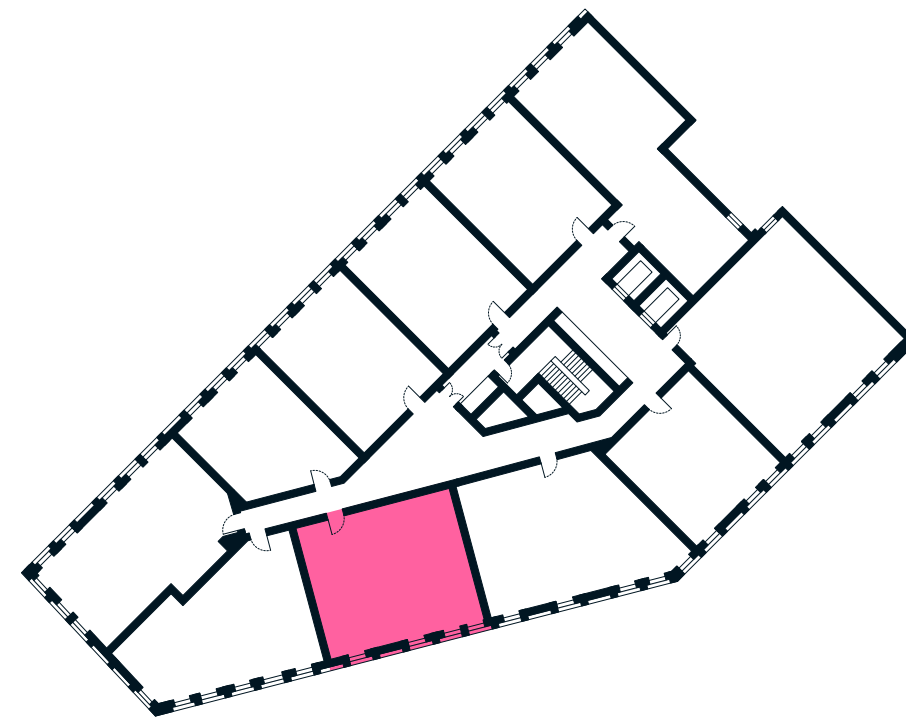
# THE LINTER BUILDING 2 BEDROOM APARTMENT TYPE 2-05-A

Sq m	76.1
Sq ft	819



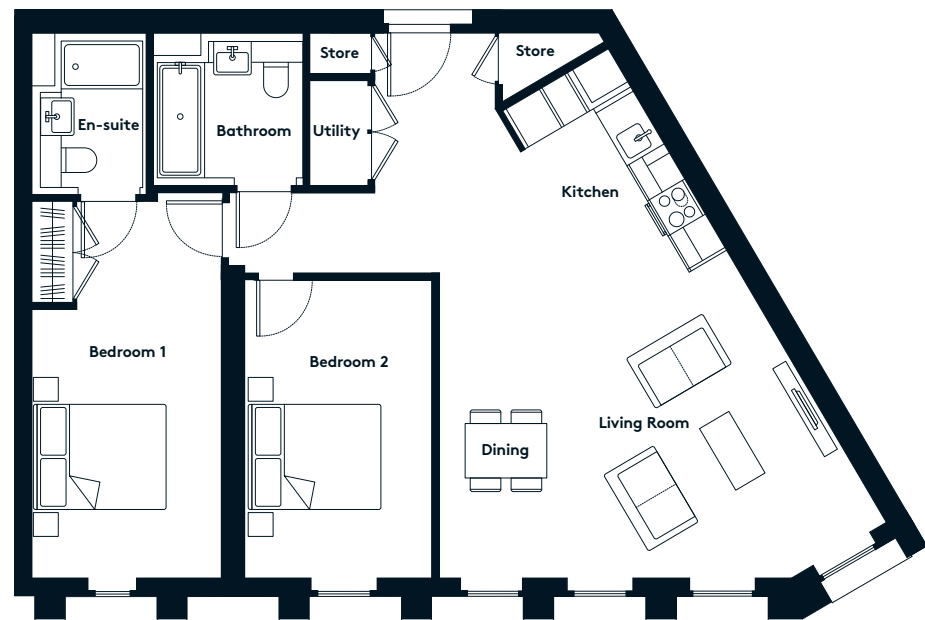
# AVAILABLE APARTMENTS

3rd floor	304
4th floor	404
6th floor	604
7th floor	704
9th floor	904
10th floor	1004
11th floor	1104



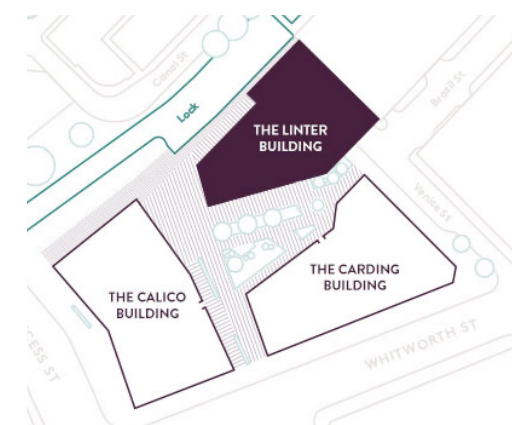
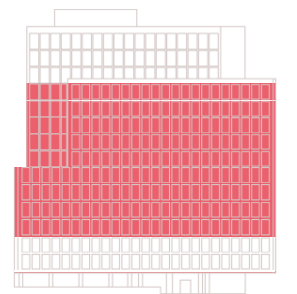
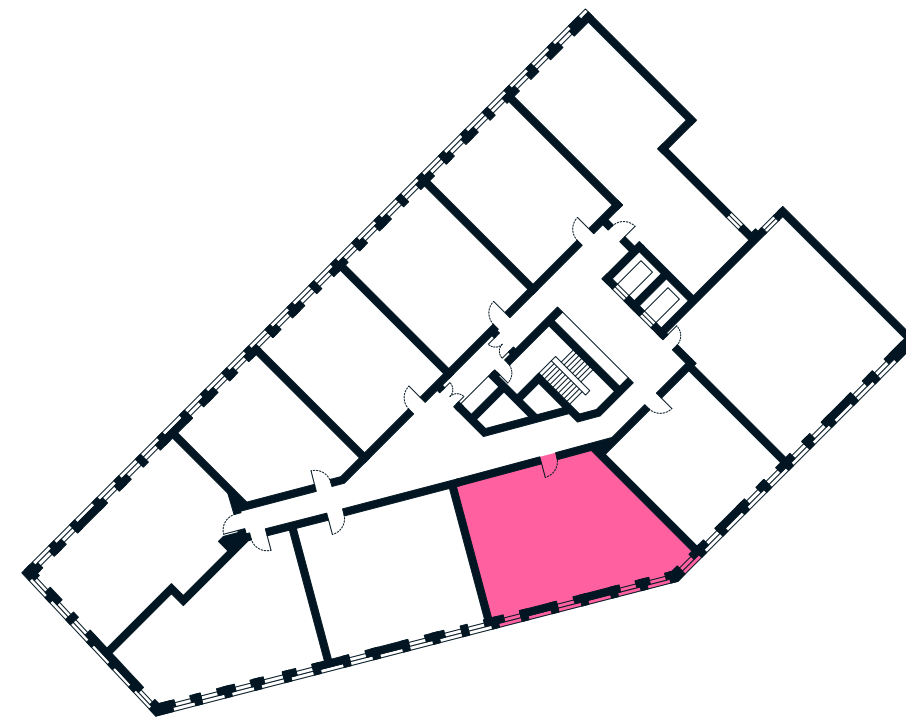
# THE LINTER BUILDING 2 BEDROOM APARTMENT TYPE 2-06-A

Sq m	86.0
Sq ft	926



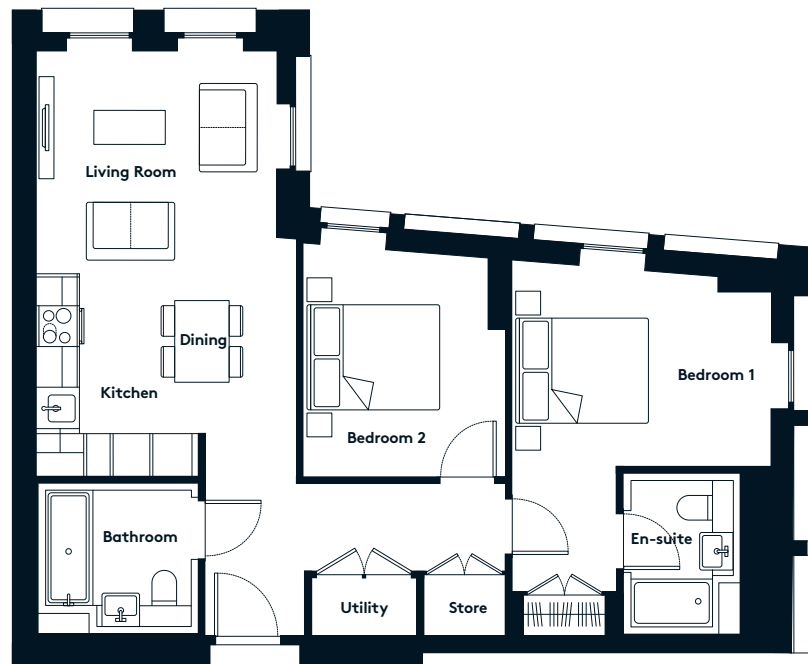
# AVAILABLE APARTMENTS

3rd floor	303
4th floor	403
5th floor	503
6th floor	603
7th floor	703
8th floor	803
9th floor	903
10th floor	1003
11th floor	1103



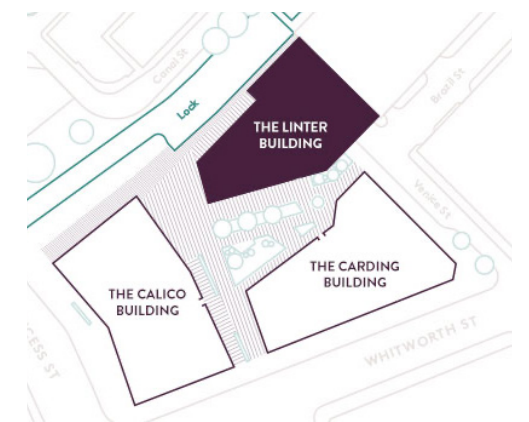
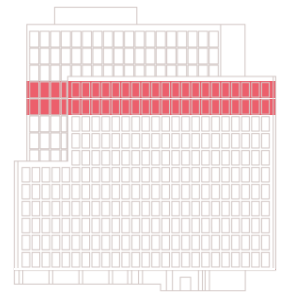
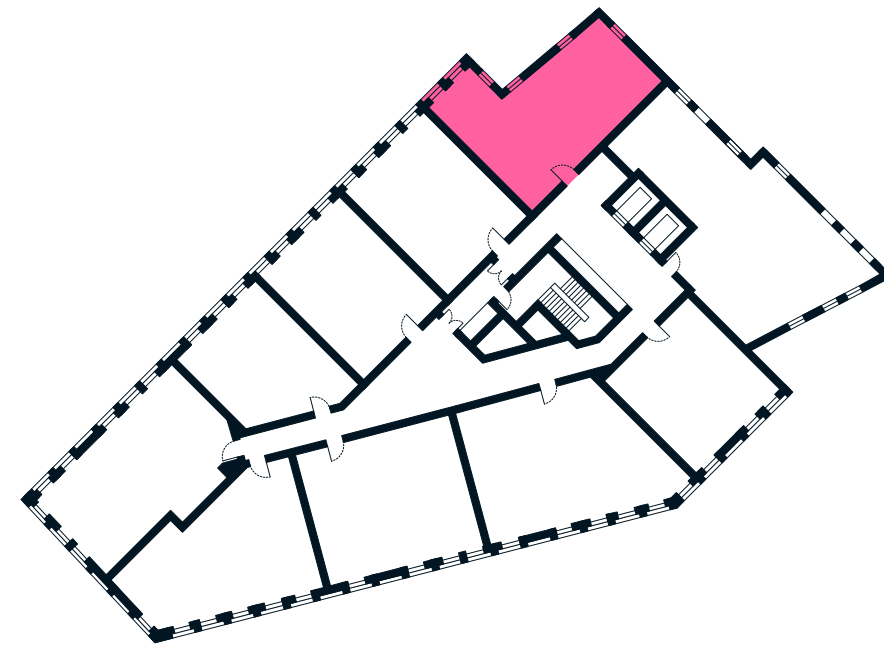
# THE LINTER BUILDING 2 BEDROOM APARTMENT TYPE 2-07-A

Sq m	72.3
Sq ft	778



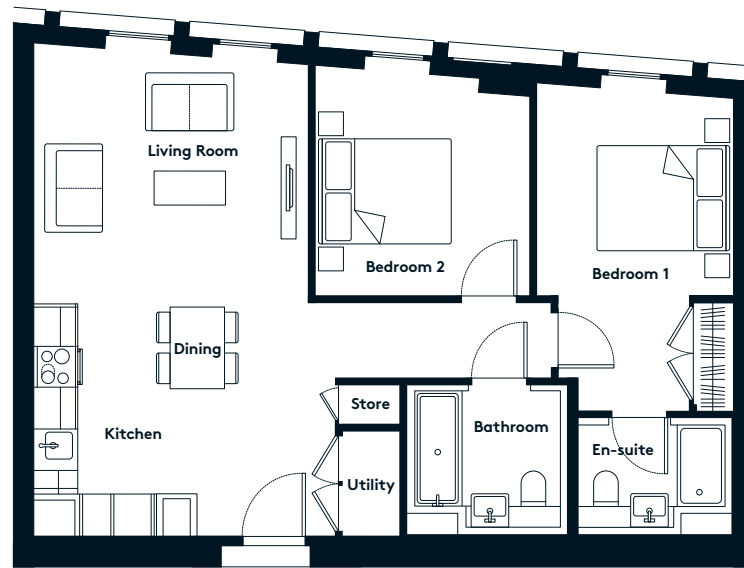
# AVAILABLE APARTMENTS

10th floor	1010
11th floor	1110



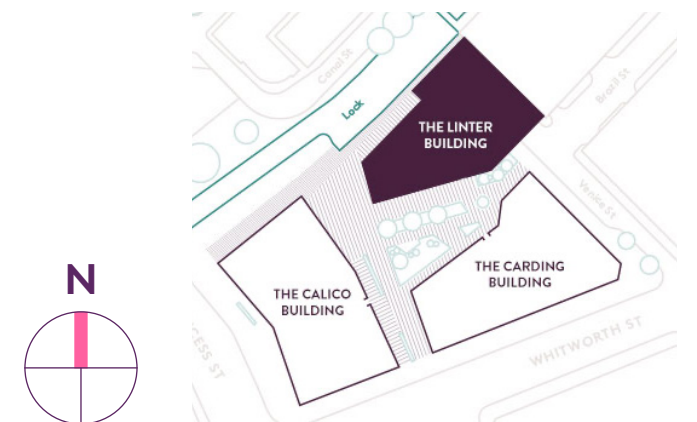
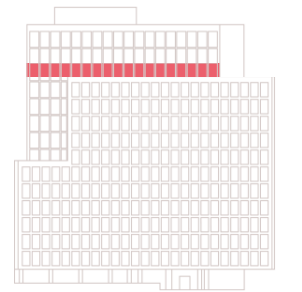
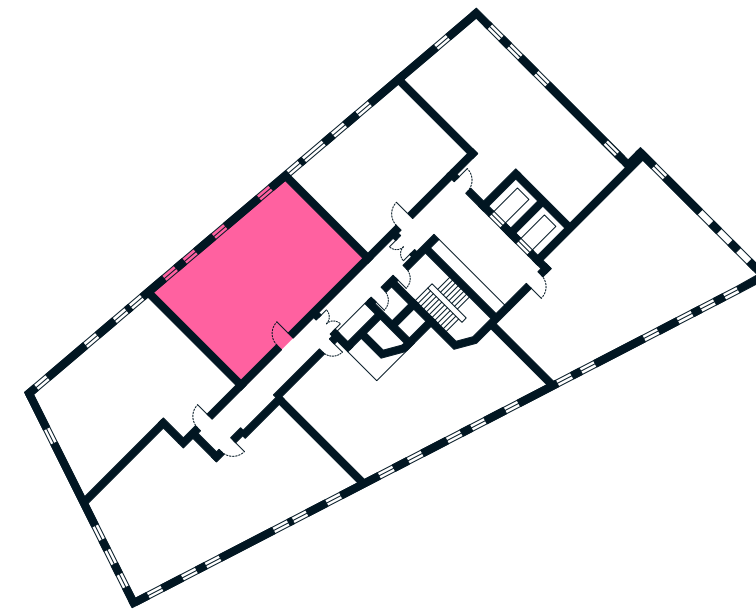
# THE LINTER BUILDING 2 BEDROOM APARTMENT TYPE 2-08-A

Sq m	71.3
Sq ft	767



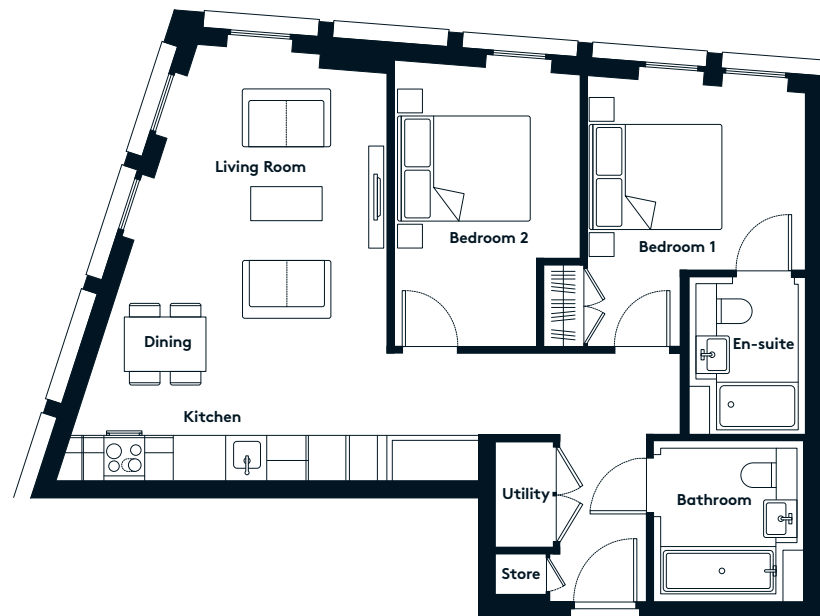
# AVAILABLE APARTMENTS

12th floor	1205
------------	------



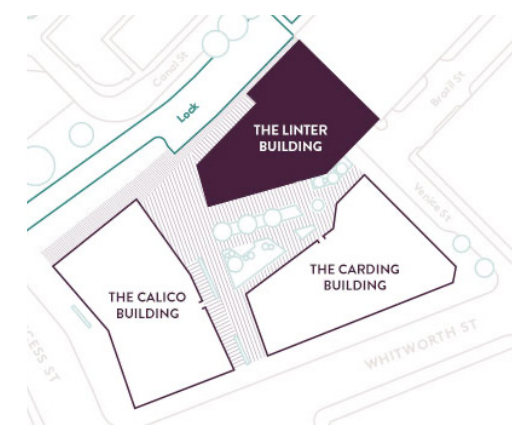
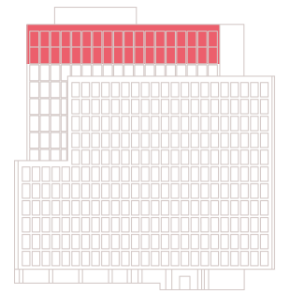
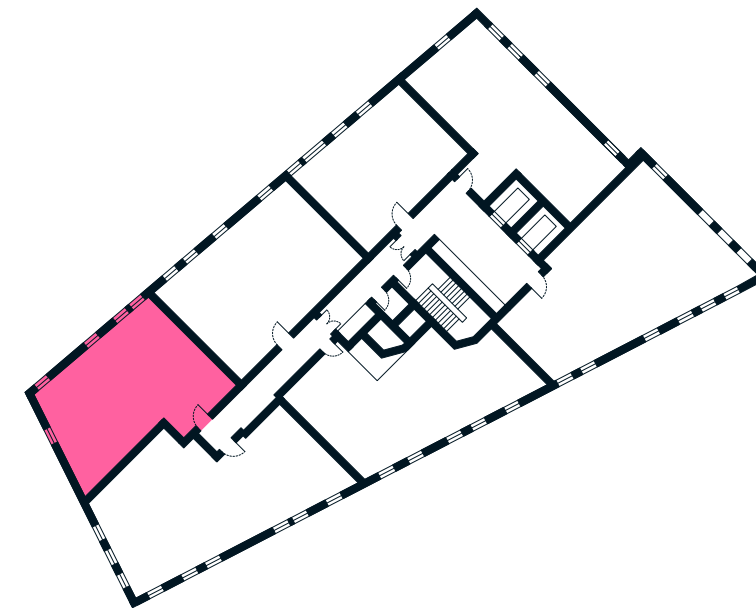
# THE LINTER BUILDING 2 BEDROOM APARTMENT TYPE 2-09-A

Sq m	70.2
Sq ft	755



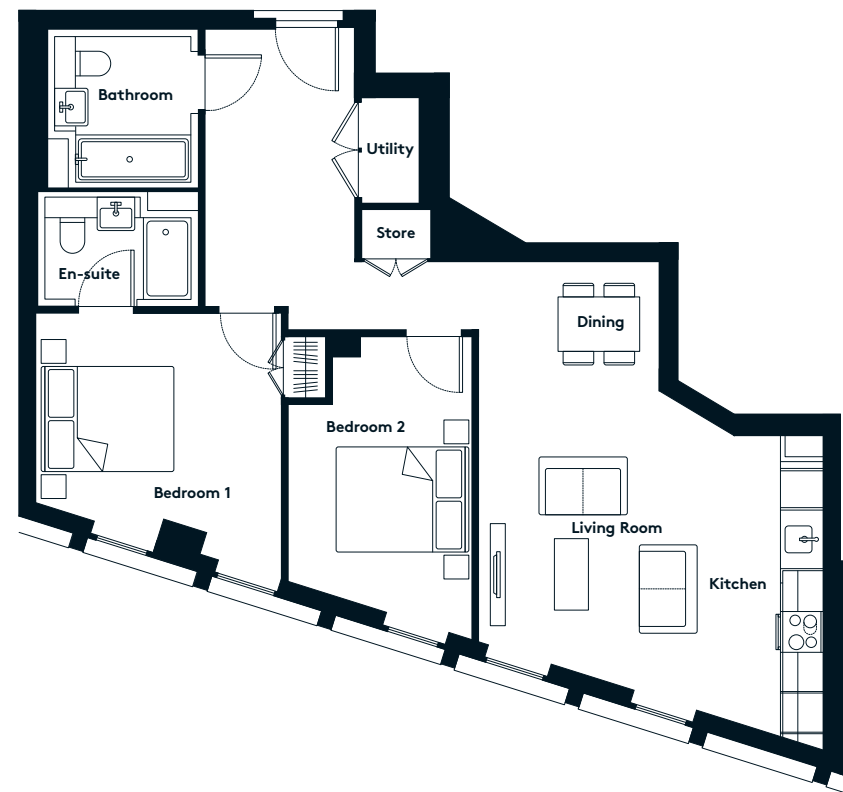
# AVAILABLE APARTMENTS

13th floor	1304
14th floor	1404



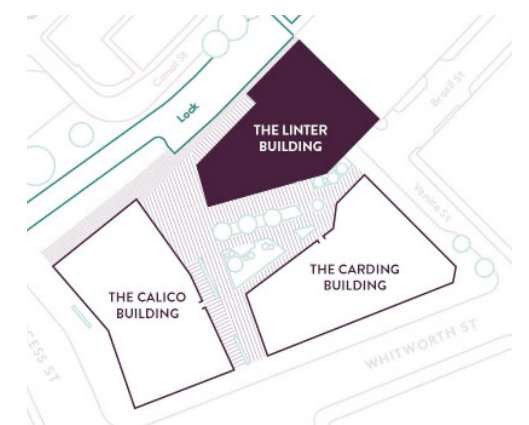
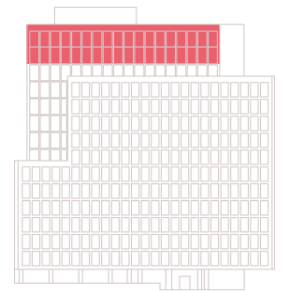
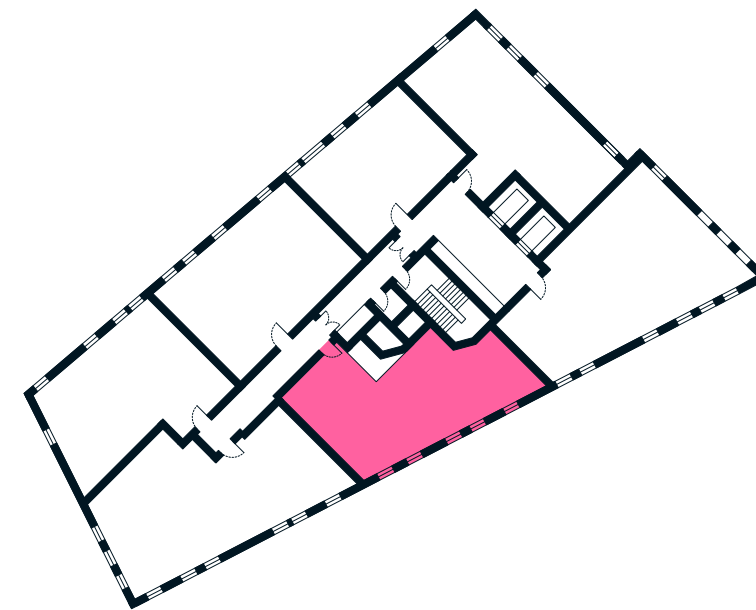
# THE LINTER BUILDING 2 BEDROOM APARTMENT TYPE 2-10-A

Sq m	76.7
Sq ft	825



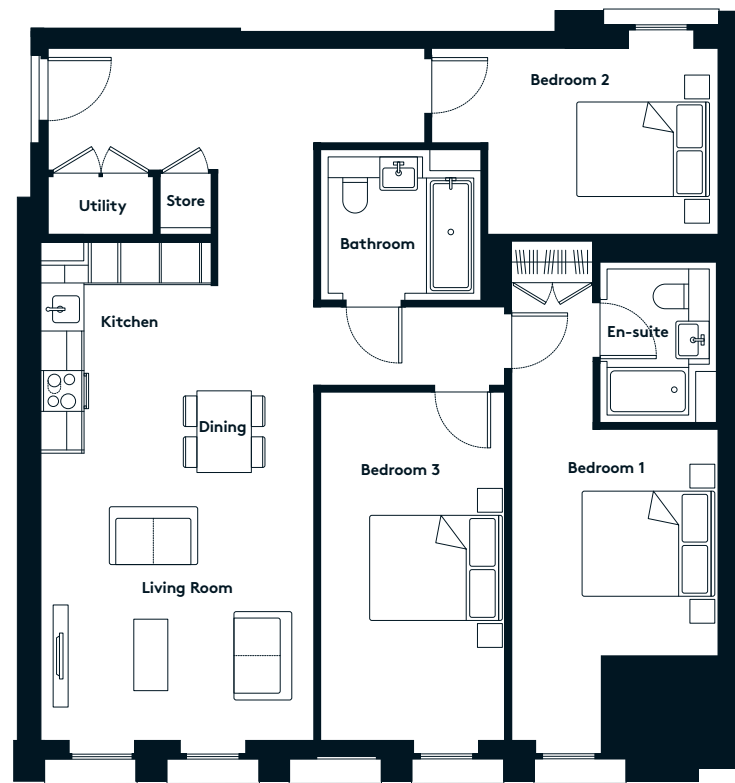
# AVAILABLE APARTMENTS

13th floor	1302
14th floor	1402



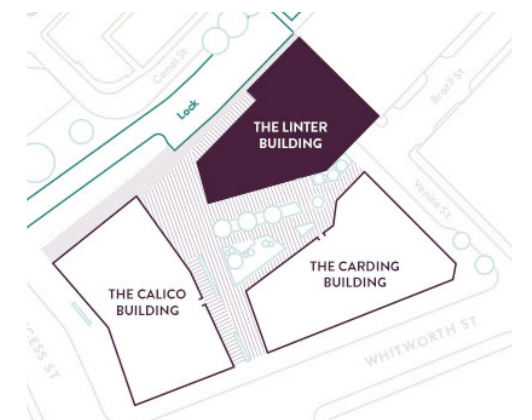
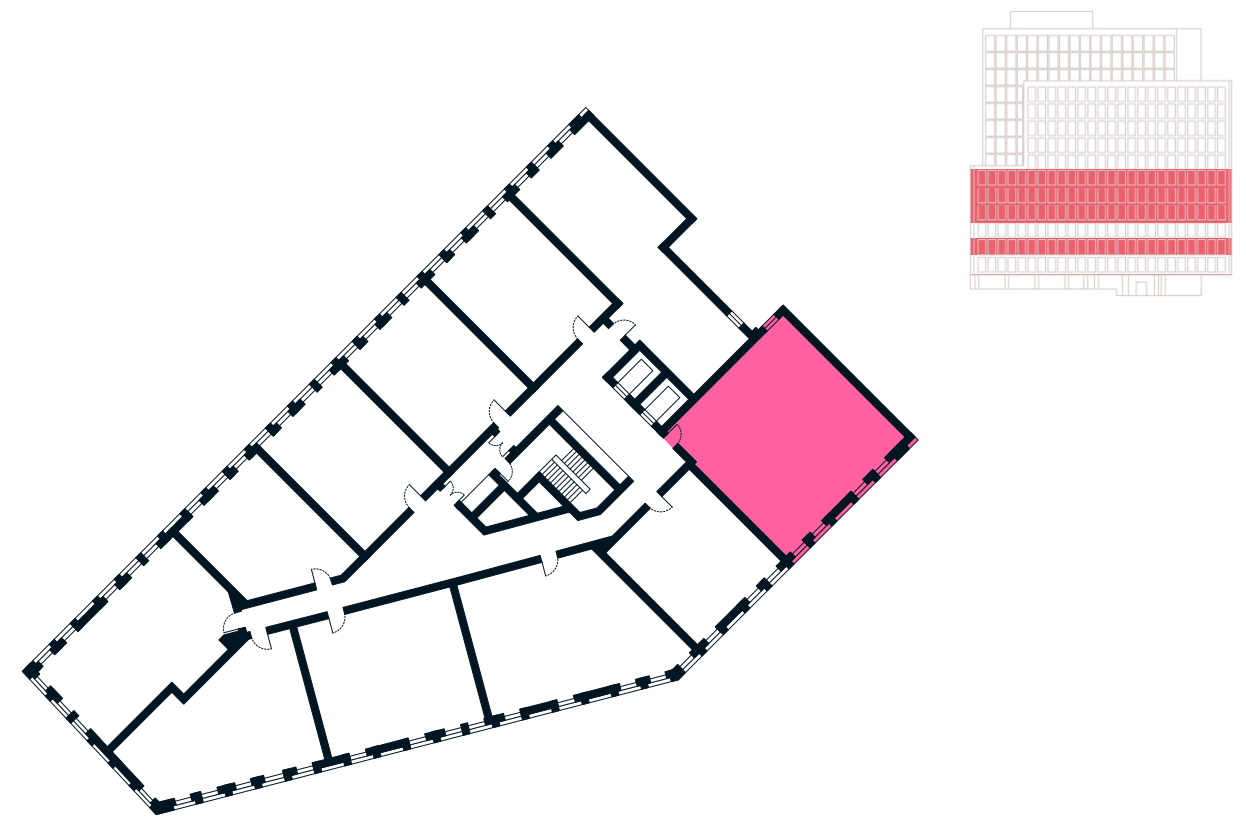
# THE LINTER BUILDING 3 BEDROOM APARTMENT TYPE 3-01-A

Sq m	102.2
Sq ft	1100



# AVAILABLE APARTMENTS

2nd floor	201
4th floor	401
5th floor	501
6th floor	601





# Urban&Civic

50 New Bond Street  
London, W1S 1BJ

Tel: +44 (0)20 7509 5555  
info@urbanandcivic.com



Tel: +44 (0)161 200 1669  
manchesternewsquare.com

## Misrepresentation Act

Urban and Civic and JLL gives notice that (1) These particulars are a general outline only, for the guidance of prospective purchasers or tenants, and do not constitute the whole or any part of an offer or contract; (2) Urban and Civic and JLL cannot guarantee and accepts no liability whatsoever for the accuracy of any description, dimensions, references to condition, necessary permissions for use and occupation and other details contained herein and prospective purchasers or tenants must therefore not rely on them as agent, advisor or other representative statement of fact or representations and must satisfy themselves as to their accuracy; (3) No employee of Urban and Civic and JLL has any authority to make or give any representations or warranty or enter into any contract whatever in relation to the property; (4) Urban and Civic and JLL will not be liable, in negligence or otherwise, for any loss arising from the use of these particulars, (5) Space planning contained in this brochure is indicative only and may require modifications to the building design; (6) All floor plans are not to scale and are for identification purpose only and (7) all CGIs are indicative of the building and site only and are not an exact representation of the completed building.