





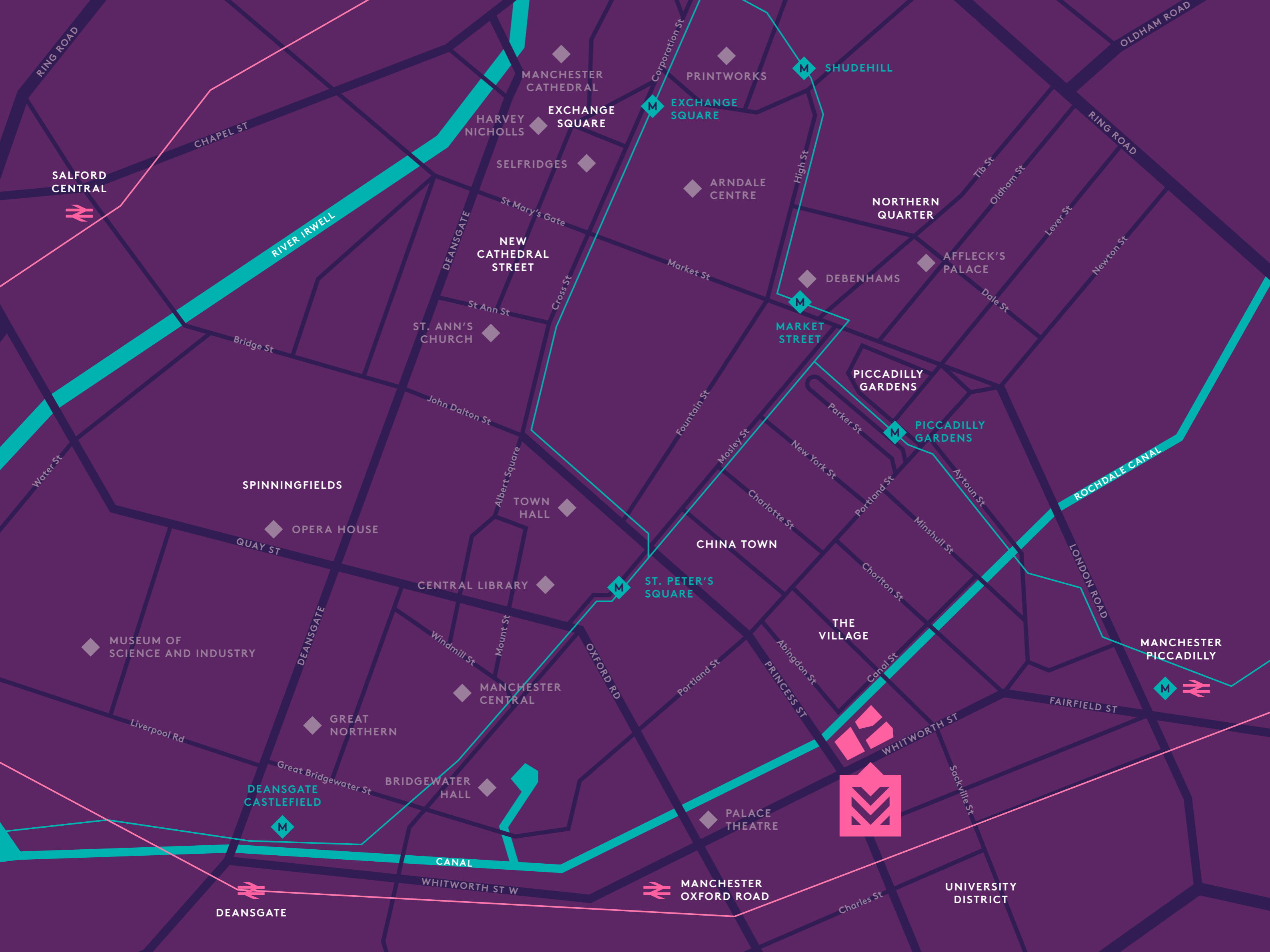
MANCHESTER
NEW
SQUARE

Urban&Civic

THE BUILDINGS

Manchester New Square is made up of three individual buildings centred around a tranquil, landscaped square, in the beating heart of the city's central community. It's just a few minutes' walk to the city's attractions and transport hubs. Residents and visitors alike will benefit from the artisan restaurants and retailers on the ground floors.





SALFORD CENTRAL

RIVER IRWELL

SPINNINGFIELDS

QUAY ST

MUSEUM OF SCIENCE AND INDUSTRY

Liverpool Rd

DEANSGATE CASTLEFIELD

DEANSGATE

MANCHESTER CATHEDRAL

EXCHANGE SQUARE

HARVEY NICHOLLS

SELFRIDGES

NEW CATHEDRAL STREET

ST. ANN'S CHURCH

TOWN HALL

CENTRAL LIBRARY

MANCHESTER CENTRAL

GREAT NORTHERN

BRIDGEWATER HALL

CANAL

WHITWORTH ST W

PRINTWORKS

EXCHANGE SQUARE

ARNDALE CENTRE

NORTHERN QUARTER

DEBENHAMS

AFFLECK'S PALACE

PICCADILLY GARDENS

PICCADILLY GARDENS

CHINA TOWN

ST. PETER'S SQUARE

THE VILLAGE



PALACE THEATRE

MANCHESTER OXFORD ROAD

UNIVERSITY DISTRICT

MANCHESTER PICCADILLY

ROCHDALE CANAL

LONDON ROAD

FAIRFIELD ST

WHITWORTH ST

PRINCESS ST

Charles St

Sackville St

Chorlton St

Minshull St

Aytoun St

Portland St

Parker St

Market St

Market St

St Mary's Gate

St Ann St

Bridge St

John Dalton St

Albert Square

Fountain St

Mosley St

New York St

Charlotte St

Portland St

Chorlton St

Portland St

Abingdon St

Canal St

Tib St

Oldham St

Lever St

Newton St

Dale St

RING ROAD

OLDHAM ROAD

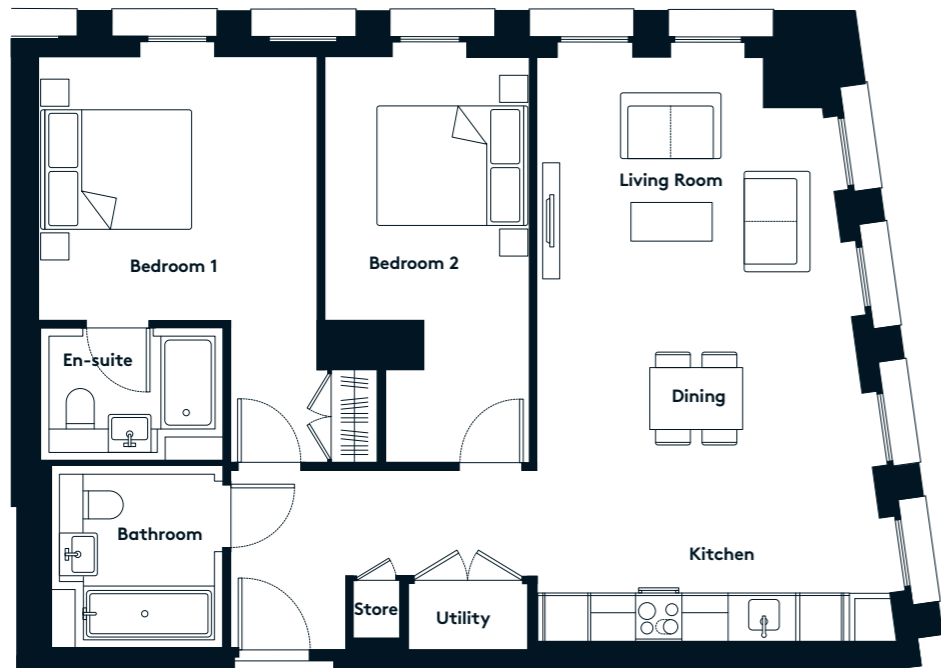
CHAPEL ST

RING ROAD



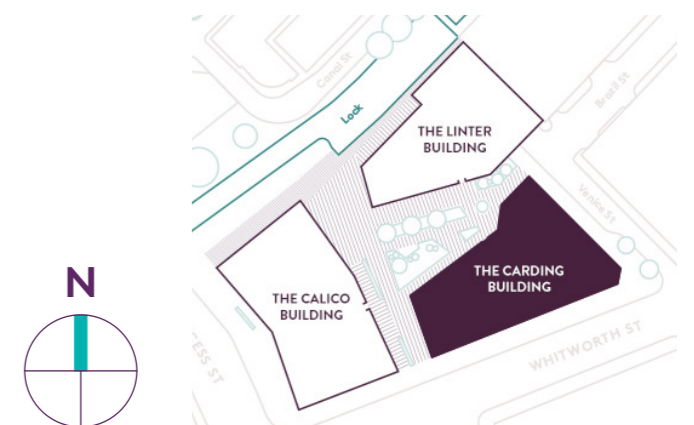
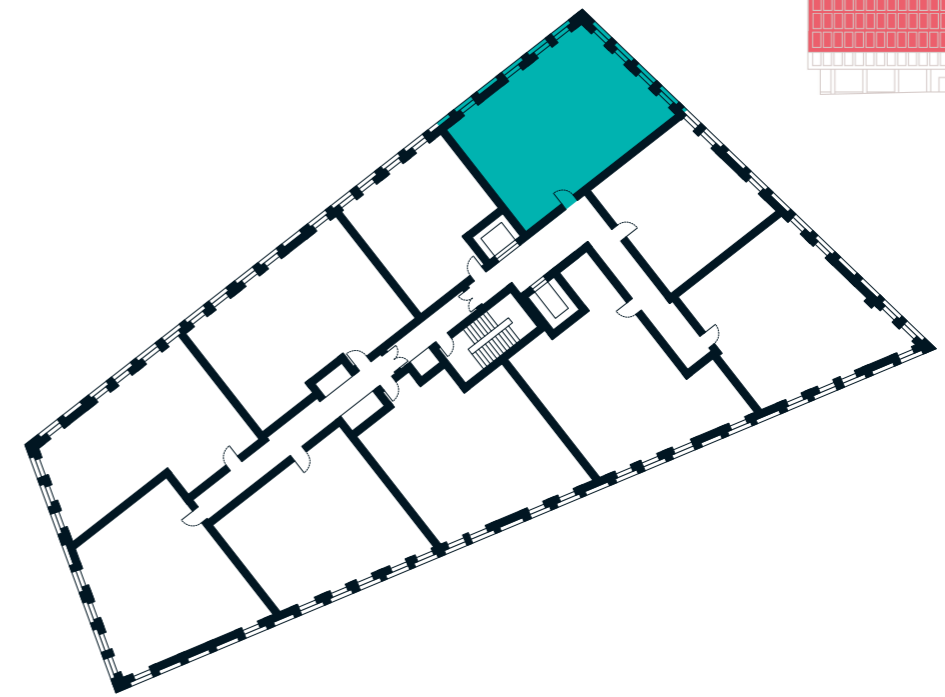
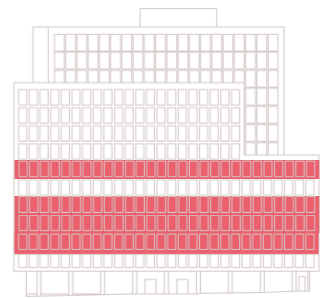
THE CARDING BUILDING 2 BEDROOM APARTMENT TYPE 2-12-A

Sq m	81.8
Sq ft	880



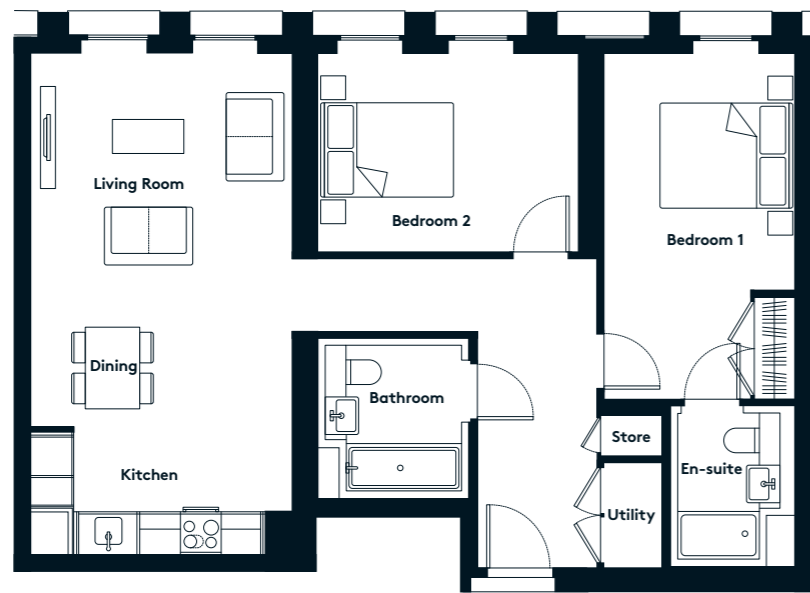
AVAILABLE APARTMENTS

2nd floor	207
3rd floor	307
4th floor	407
6th floor	607



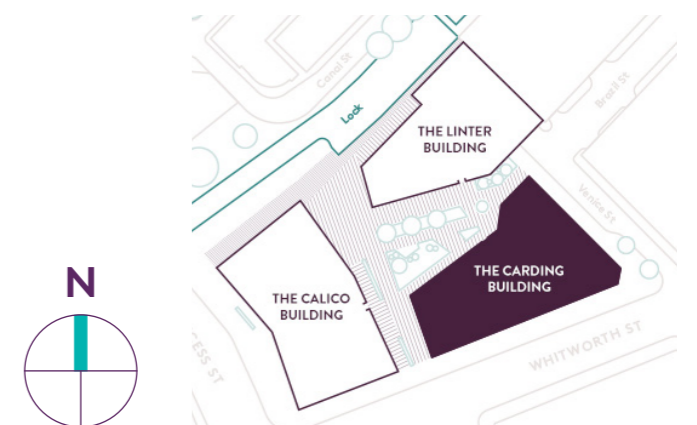
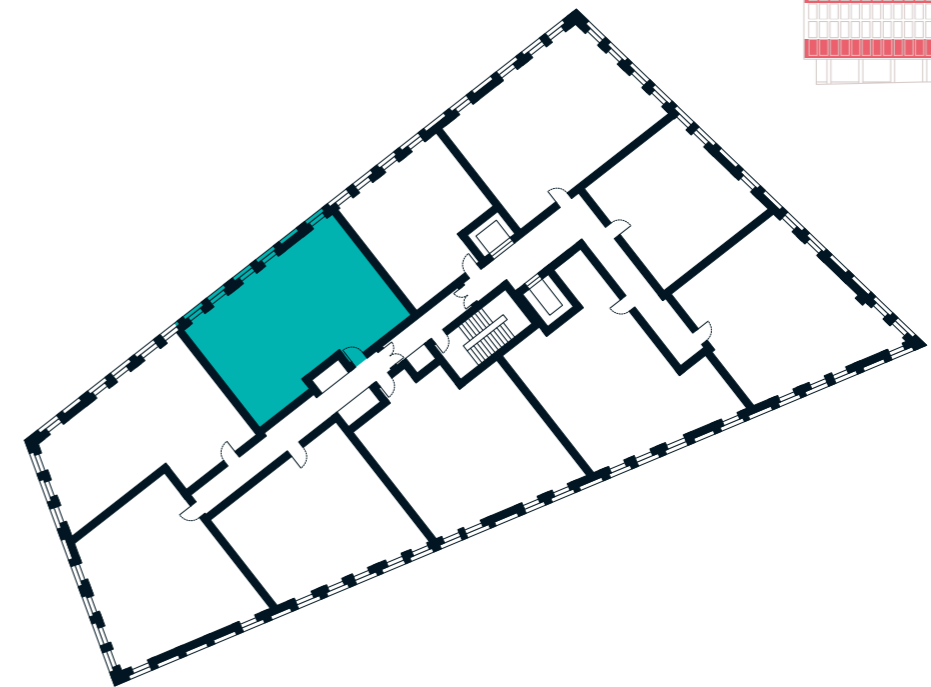
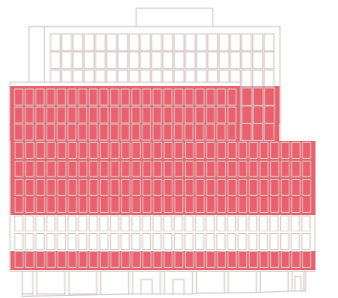
THE CARDING BUILDING 2 BEDROOM APARTMENT TYPE 2-13-A

Sq m	82.5
Sq ft	888



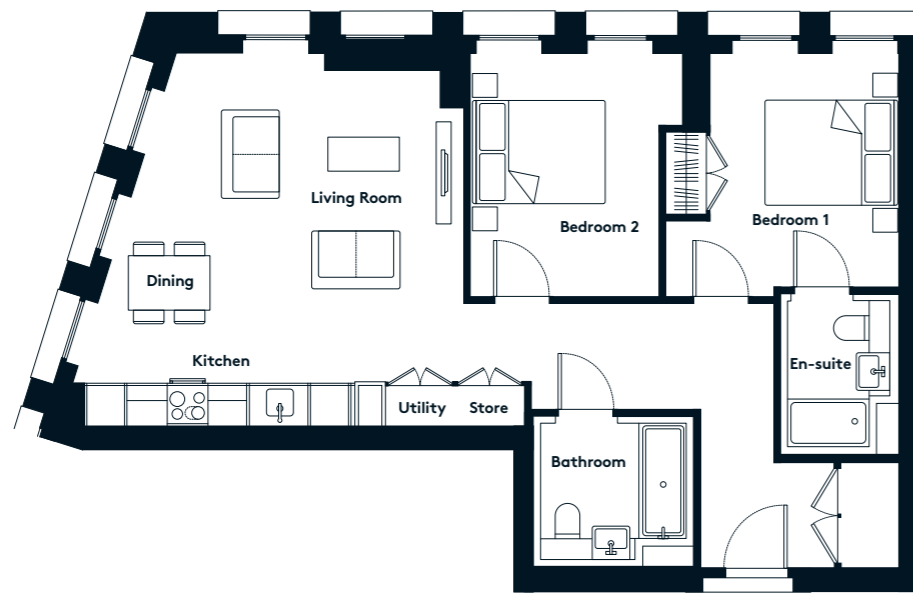
AVAILABLE APARTMENTS

1st floor	105
4th floor	405
5th floor	505
6th floor	605
7th floor	705
8th floor	805
9th floor	905
10th floor	1005



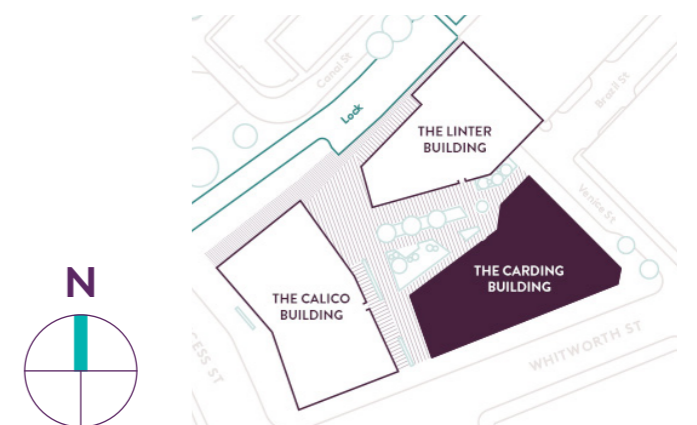
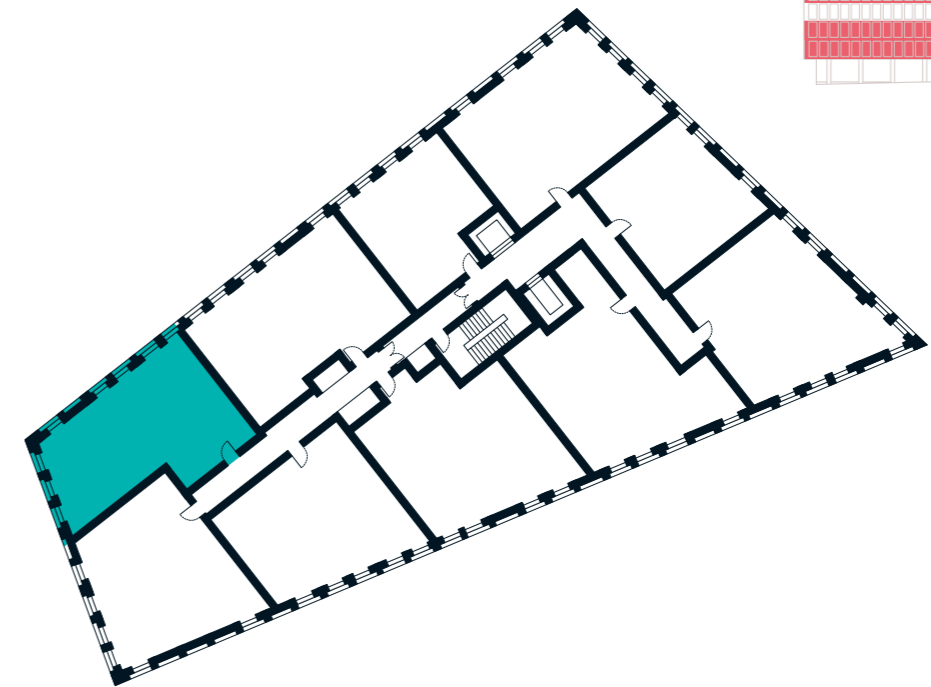
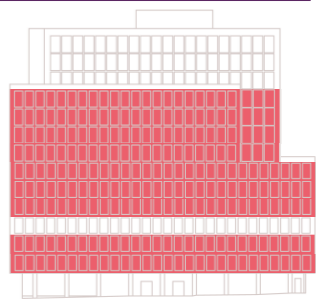
THE CARDING BUILDING 2 BEDROOM APARTMENT TYPE 2-14-A

Sq m	75.7
Sq ft	815



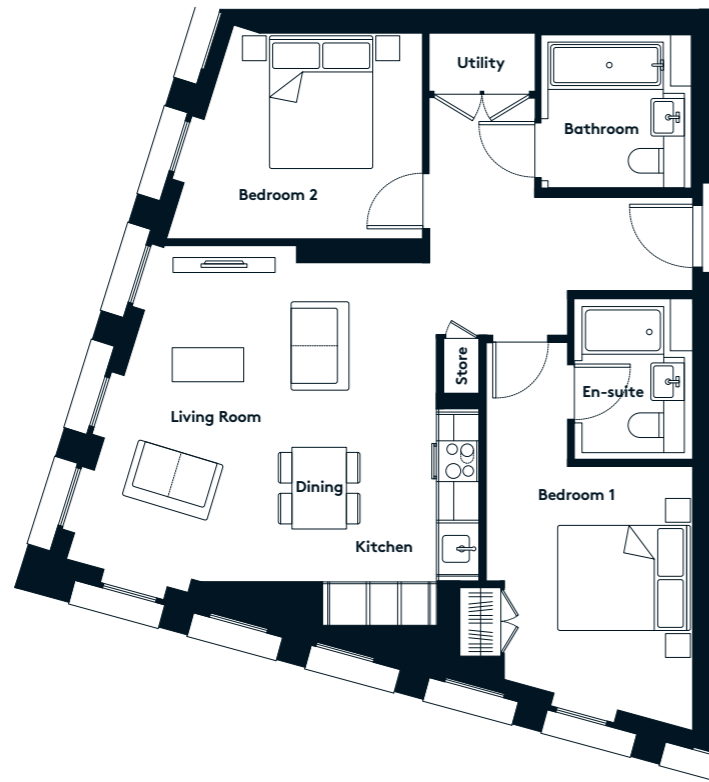
AVAILABLE APARTMENTS

2nd floor	204
3rd floor	304
4th floor	404
5th floor	504
6th floor	604
7th floor	704
8th floor	804
9th floor	904
10th floor	1004



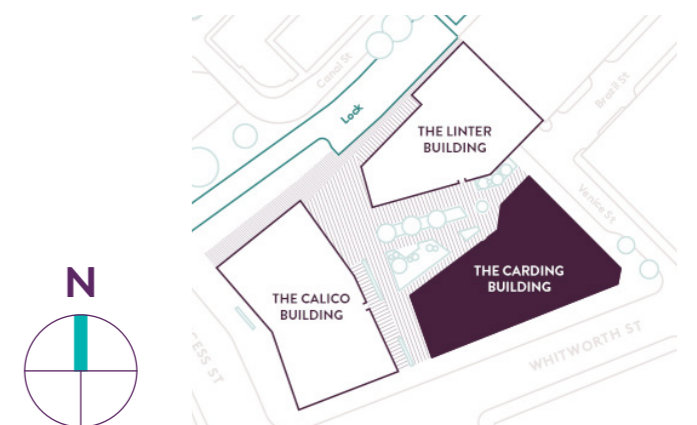
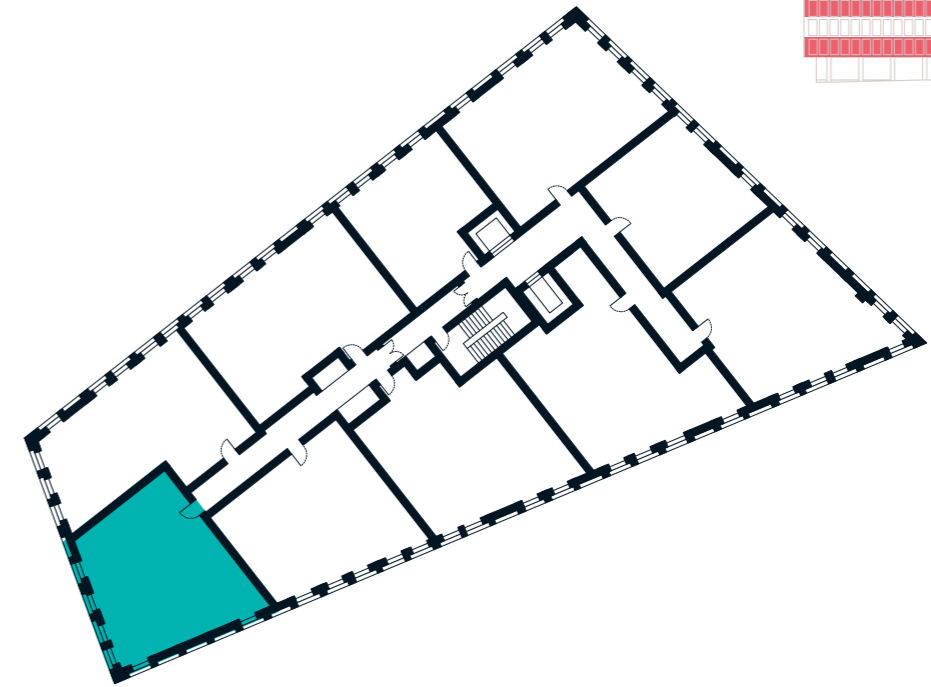
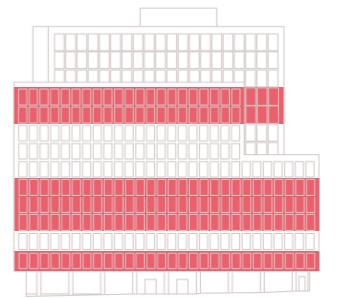
THE CARDING BUILDING 2 BEDROOM APARTMENT TYPE 2-15-A

Sq m	74.7
Sq ft	804



AVAILABLE APARTMENTS

1st floor	103
3rd floor	303
4th floor	403
5th floor	503
9th floor	903
10th floor	1003



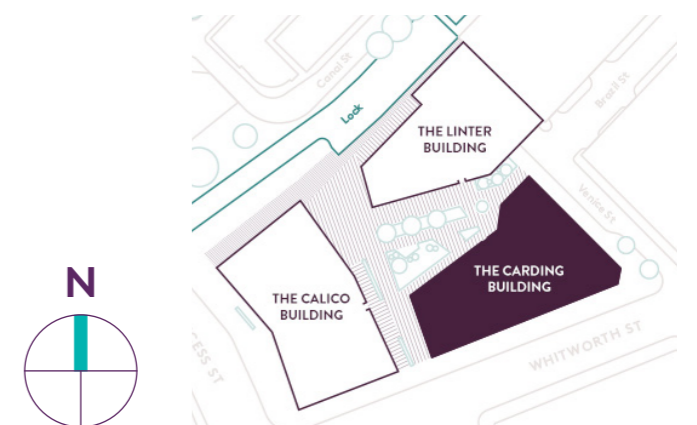
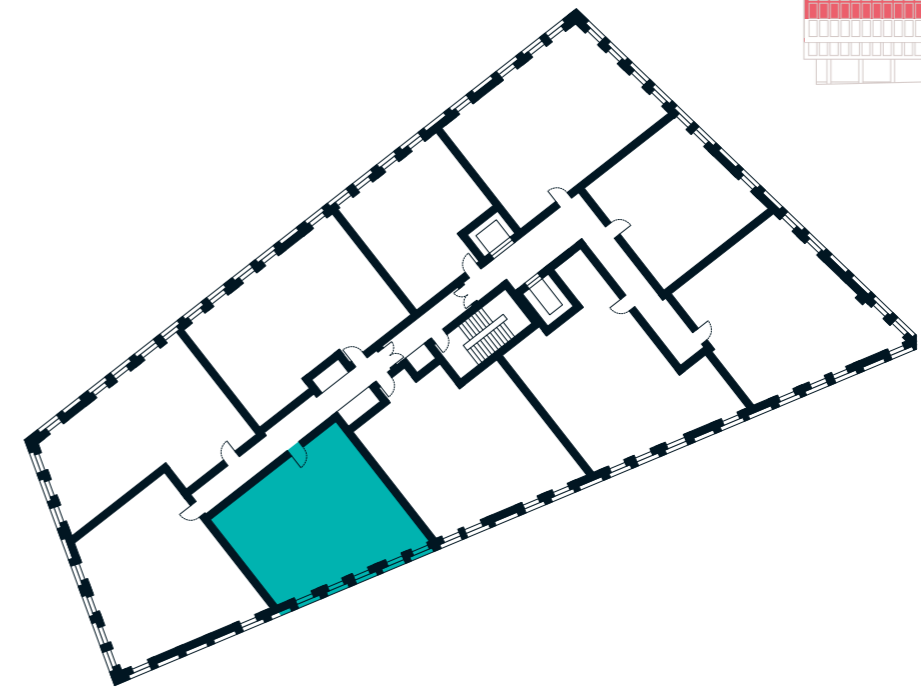
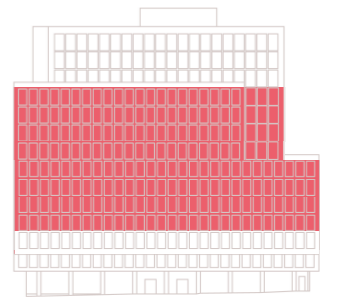
THE CARDING BUILDING 2 BEDROOM APARTMENT TYPE 2-16-A

Sq m	72.9
Sq ft	785



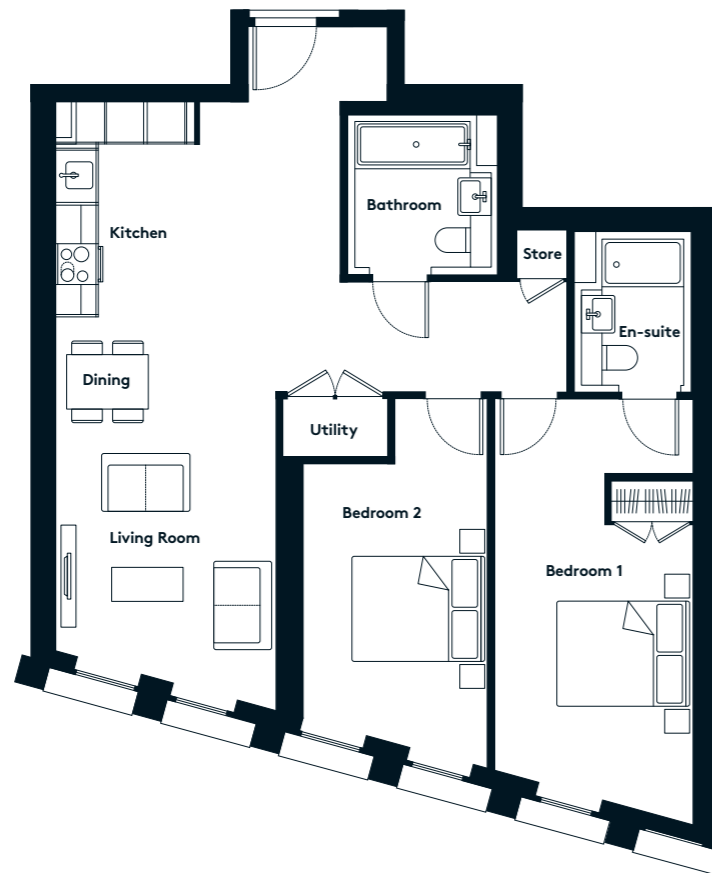
AVAILABLE APARTMENTS

3rd floor	302
4th floor	402
5th floor	502
6th floor	602
7th floor	702
8th floor	802
9th floor	902
10th floor	1002



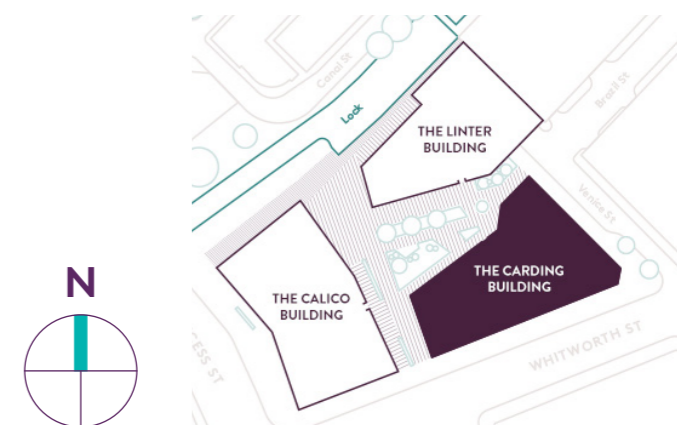
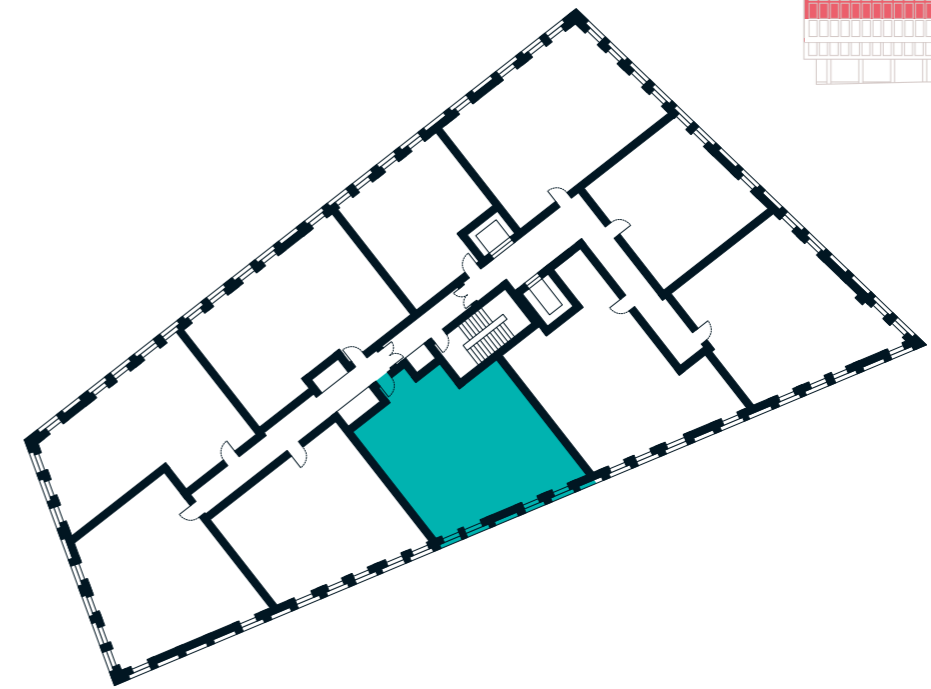
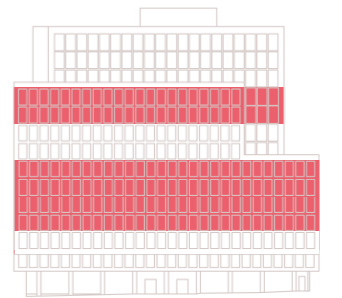
THE CARDING BUILDING 2 BEDROOM APARTMENT TYPE 2-17-A

Sq m	85.5
Sq ft	921



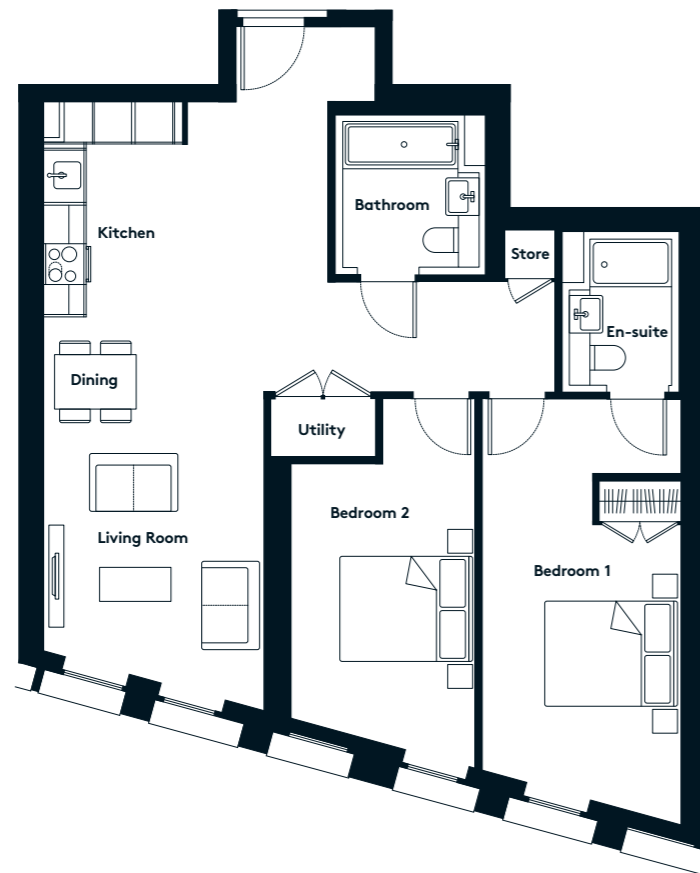
AVAILABLE APARTMENTS

3rd floor	301
4th floor	401
5th floor	501
6th floor	601
9th floor	901
10th floor	1001



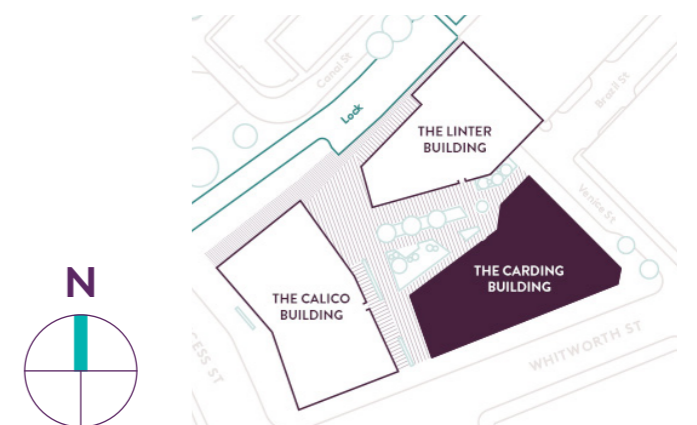
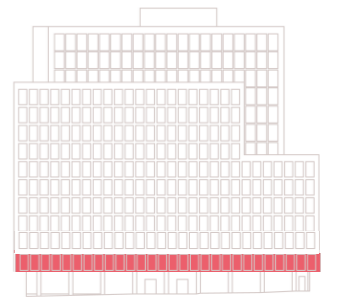
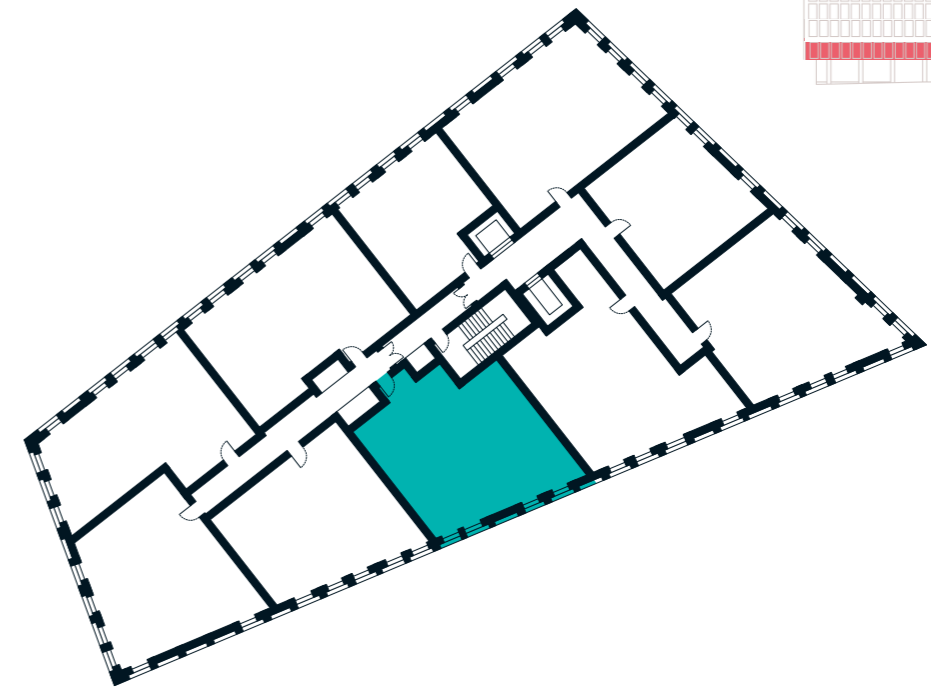
THE CARDING BUILDING 2 BEDROOM APARTMENT TYPE 2-17-C

Sq m	85.4
Sq ft	919



AVAILABLE APARTMENTS

1st floor	101
-----------	-----



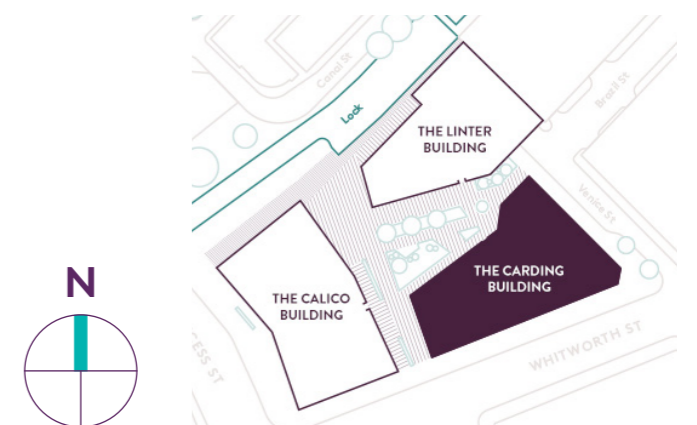
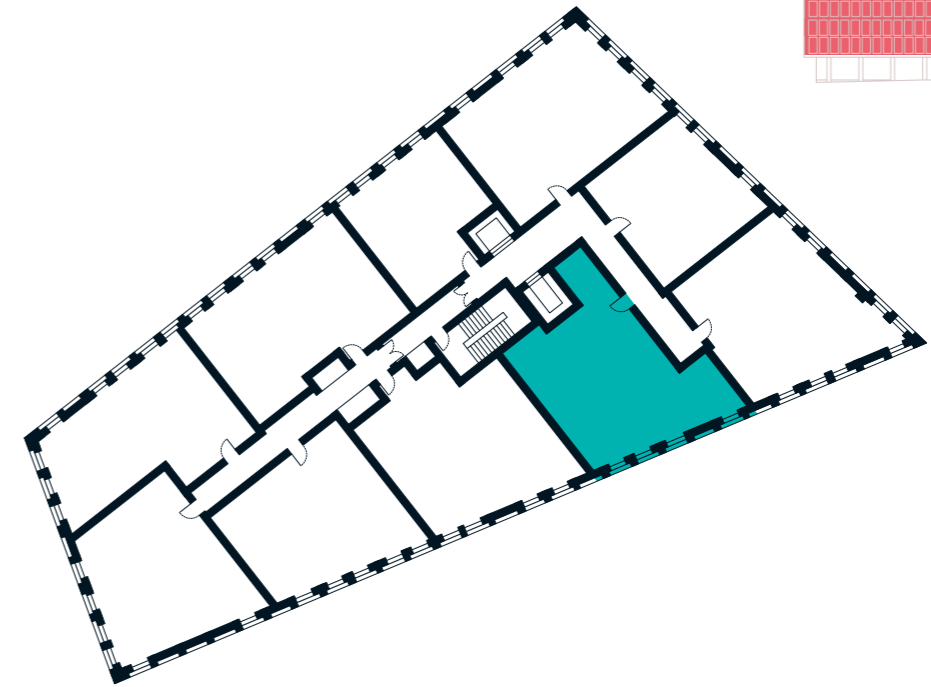
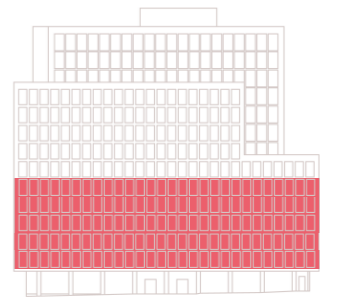
THE CARDING BUILDING 2 BEDROOM APARTMENT TYPE 2-18-A

Sq m	86.3
Sq ft	929



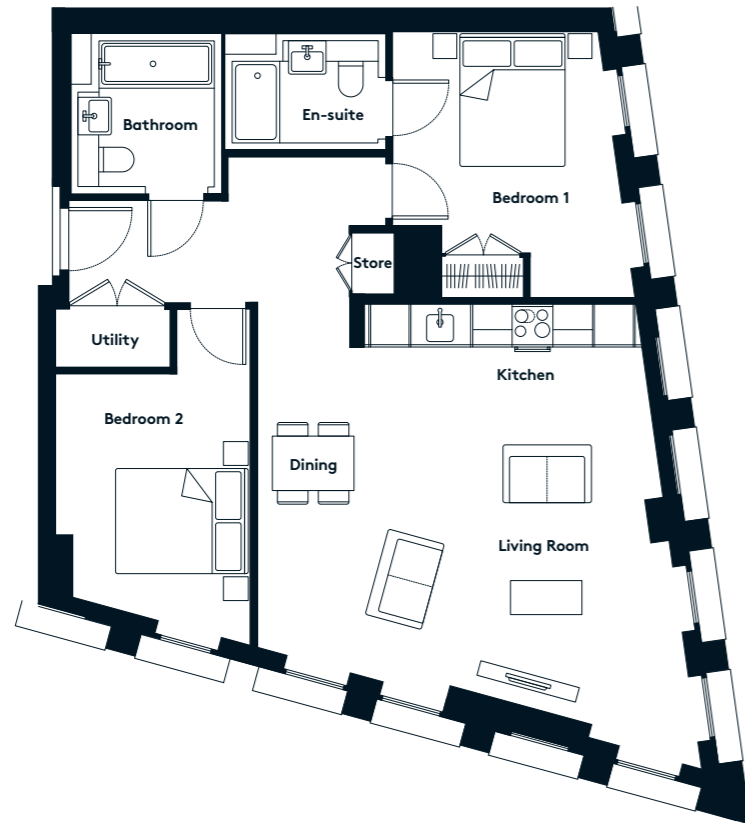
AVAILABLE APARTMENTS

1st floor	110
2nd floor	210
3rd floor	310
4th floor	410
5th floor	510



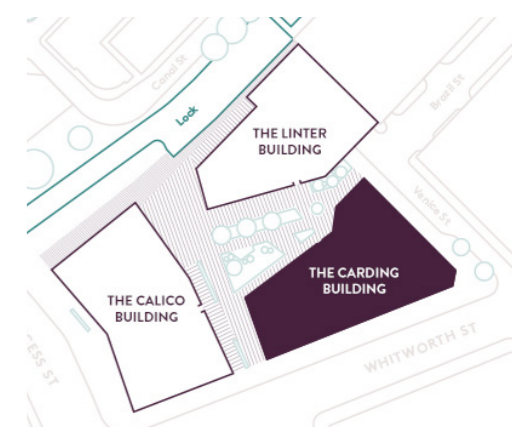
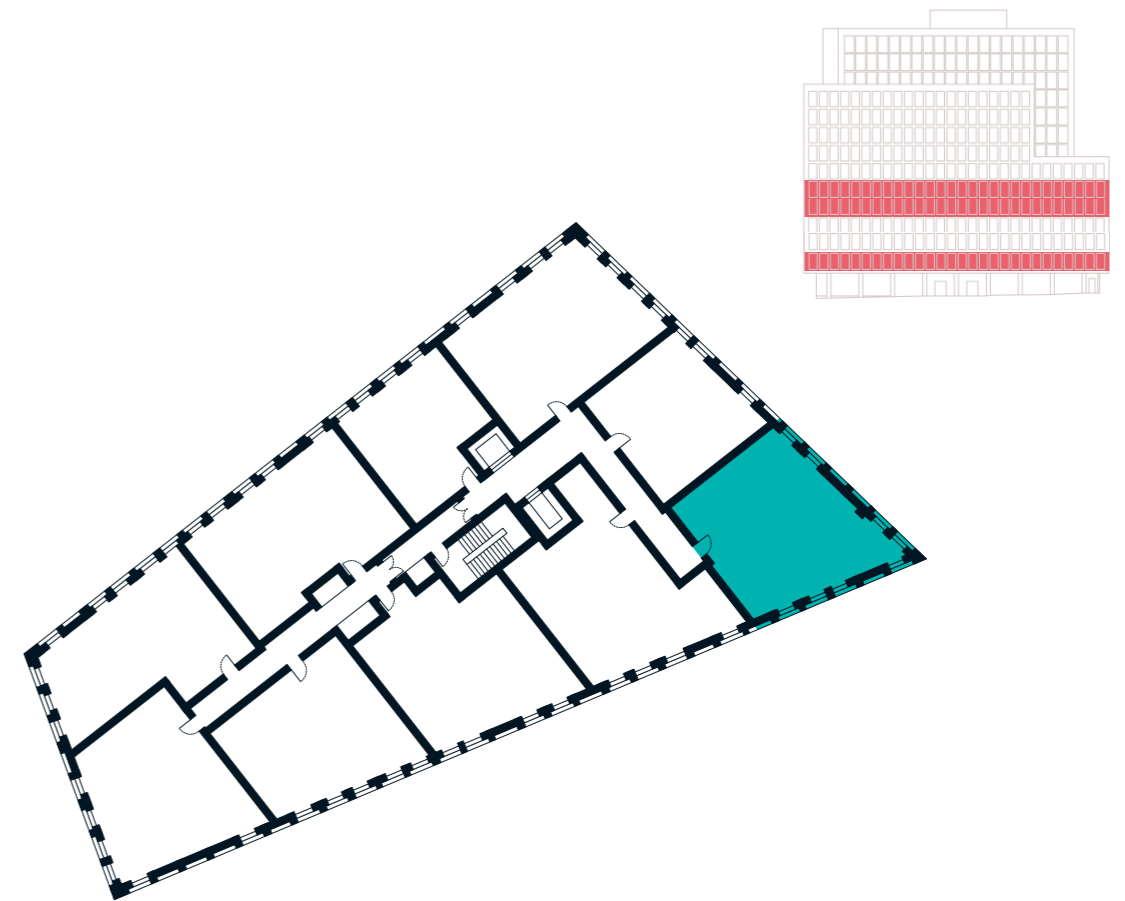
THE CARDING BUILDING 2 BEDROOM APARTMENT TYPE 2-19-A

Sq m	82.8
Sq ft	891



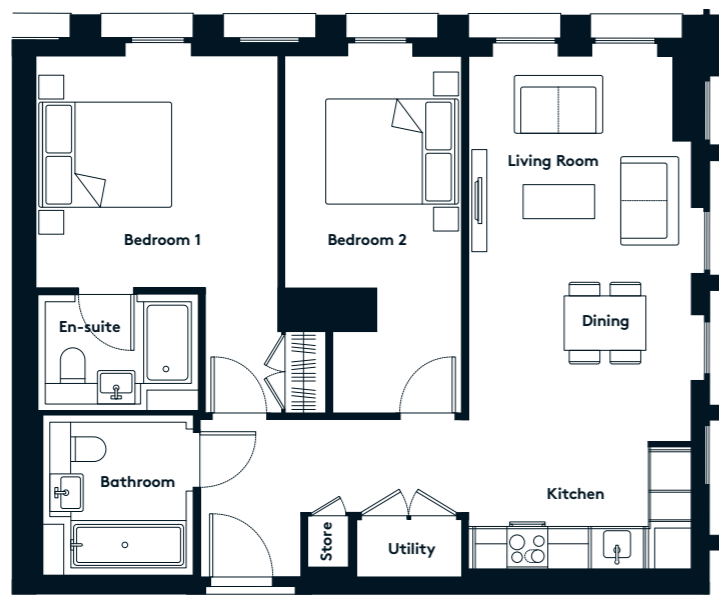
AVAILABLE APARTMENTS

1st floor	109
4th floor	409
5th floor	509



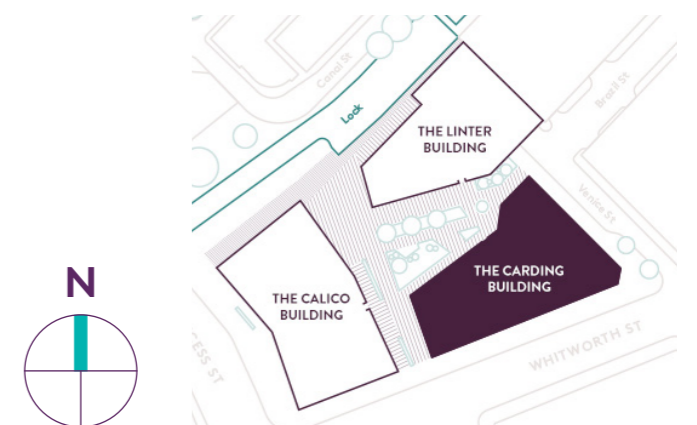
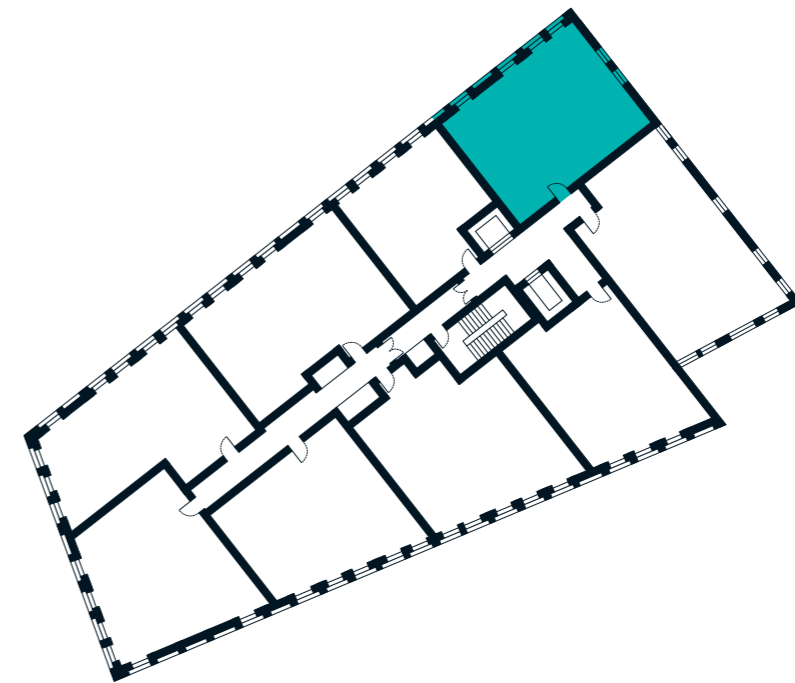
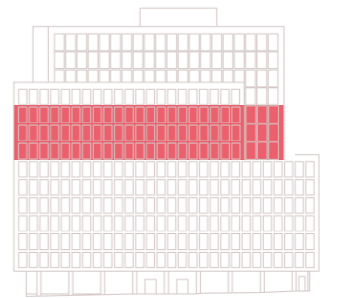
THE CARDING BUILDING 2 BEDROOM APARTMENT TYPE 2-20-A

Sq m	74.3
Sq ft	799



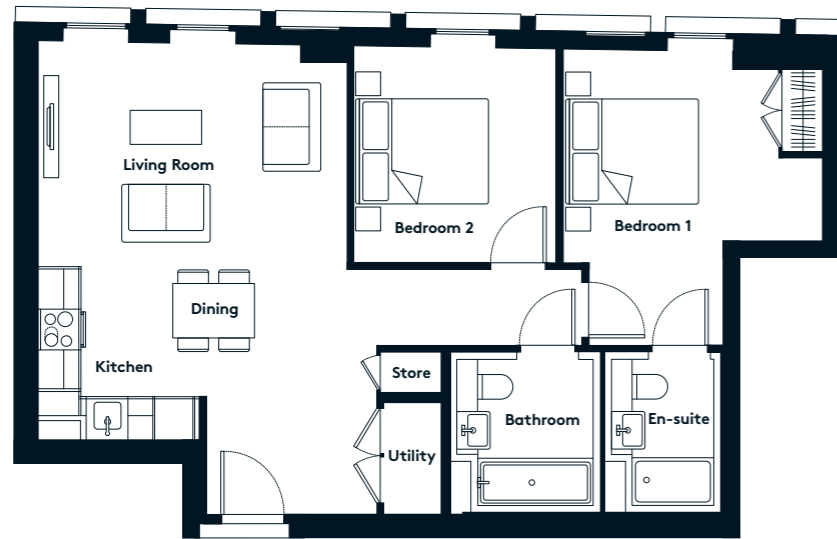
AVAILABLE APARTMENTS

7th floor	707
8th floor	807
9th floor	907



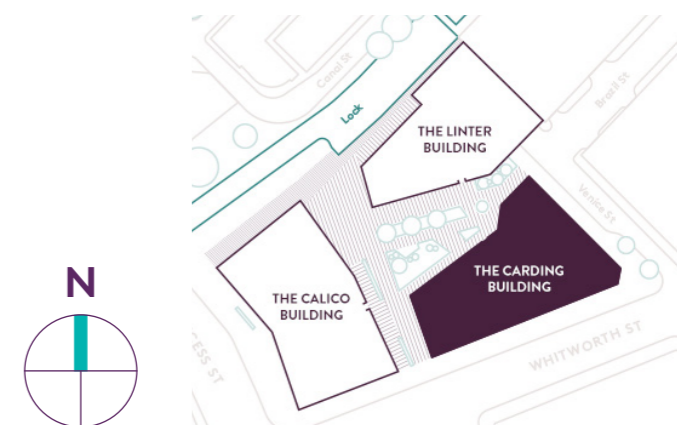
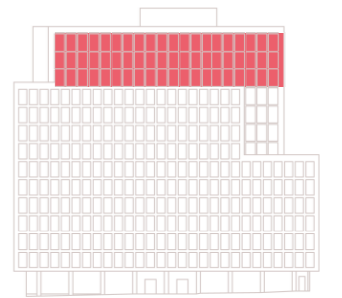
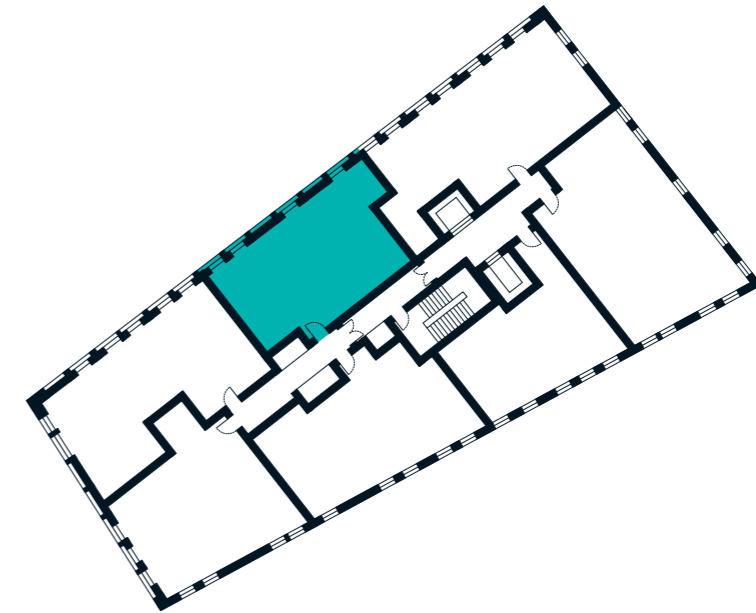
THE CARDING BUILDING 2 BEDROOM APARTMENT TYPE 2-23-A

Sq m	71.4
Sq ft	769



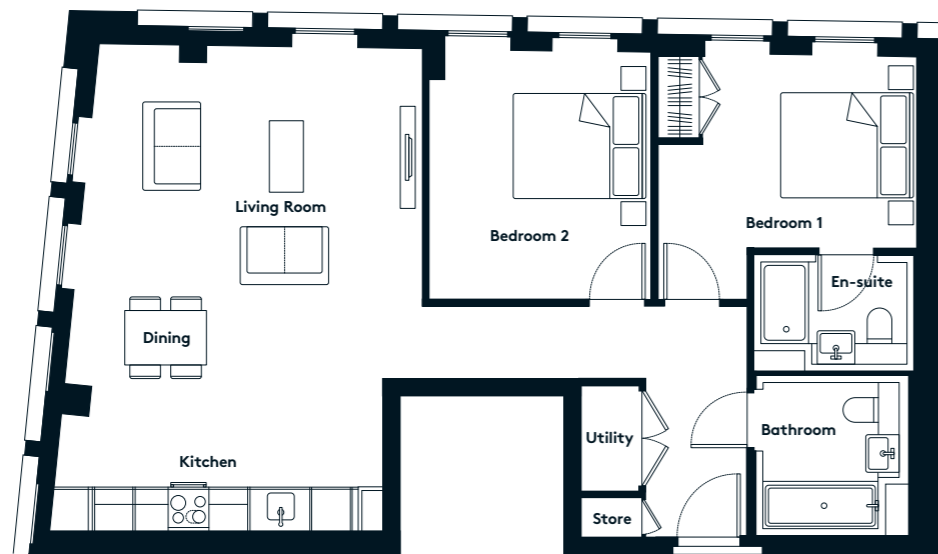
AVAILABLE APARTMENTS

11th floor	1104
12th floor	1204
13th floor	1304



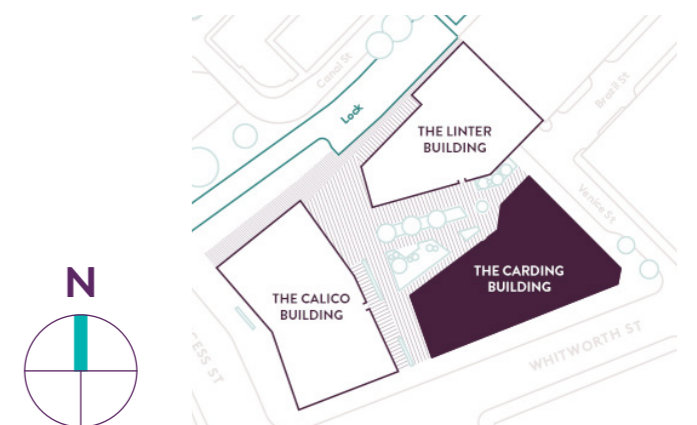
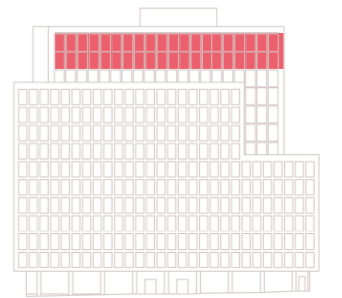
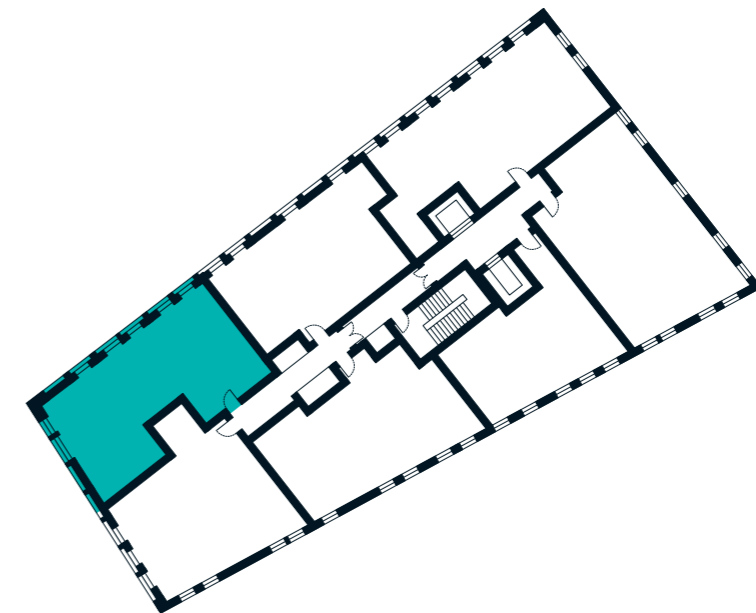
THE CARDING BUILDING 2 BEDROOM APARTMENT TYPE 2-24-A

Sq m	82.8
Sq ft	891



AVAILABLE APARTMENTS

12th floor	1203
13th floor	1303



Urban&Civic

50 New Bond Street
London, W1S 1BJ

Tel: +44 (0)20 7509 5555
info@urbanandcivic.com



Tel: +44 (0)161 200 1669
manchesternewsquare.com

Misrepresentation Act

Urban and Civic and JLL gives notice that (1) These particulars are a general outline only, for the guidance of prospective purchasers or tenants, and do not constitute the whole or any part of an offer or contract; (2) Urban and Civic and JLL cannot guarantee and accepts no liability whatsoever for the accuracy of any description, dimensions, references to condition, necessary permissions for use and occupation and other details contained herein and prospective purchasers or tenants must therefore not rely on them as agent, advisor or other representative statement of fact or representations and must satisfy themselves as to their accuracy; (3) No employee of Urban and Civic and JLL has any authority to make or give any representations or warranty or enter into any contract whatever in relation to the property; (4) Urban and Civic and JLL will not be liable, in negligence or otherwise, for any loss arising from the use of these particulars, (5) Space planning contained in this brochure is indicative only and may require modifications to the building design; (6) All floor plans are not to scale and are for identification purpose only and (7) all CGIs are indicative of the building and site only and are not an exact representation of the completed building.